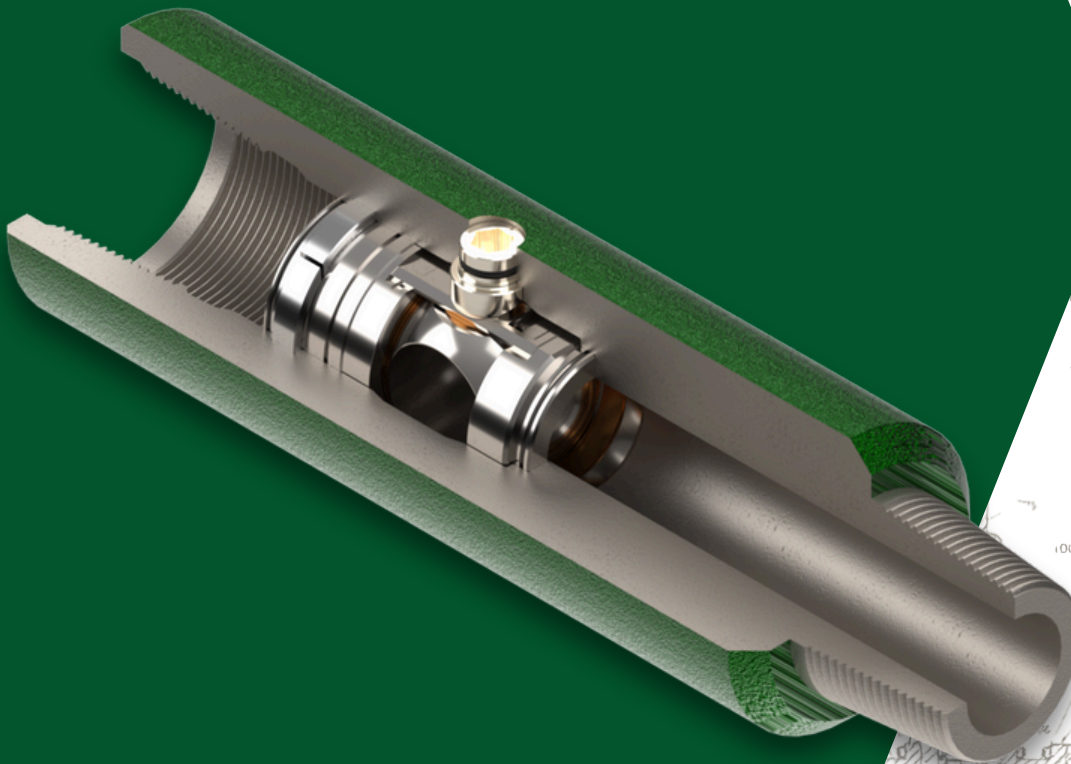


M&M OIL TOOLS

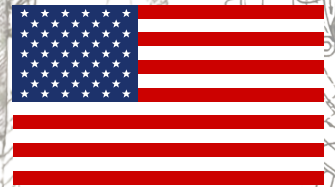


"We are here to serve our customers!"



+1 337-442-6057

www.mmoiltools.com



Made in USA



ABOUT US

M&M Oil Tools has proudly served the oil and gas industry since 1944, delivering high-performance tools designed to increase reliability, simplify maintenance, and provide lasting value. From the beginning, our focus has been on solving real-world challenges with innovative, dependable solutions.

We are committed to serving our customers with excellence, offering quality tools that perform under pressure, and supporting operations around the globe. Our product line includes casing scrapers and brushes, safety and kelly valves, internal blowout preventer valves, and surface test trees (flowheads).

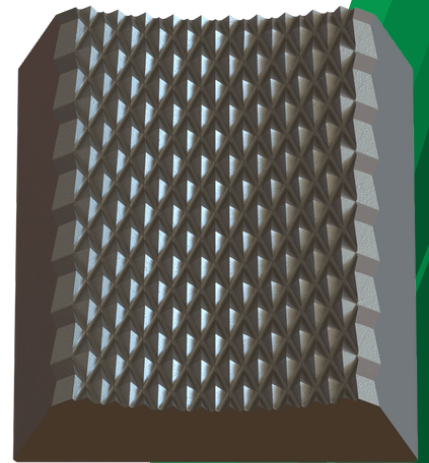
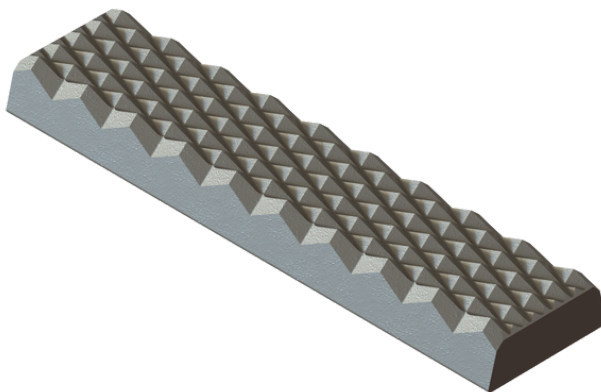
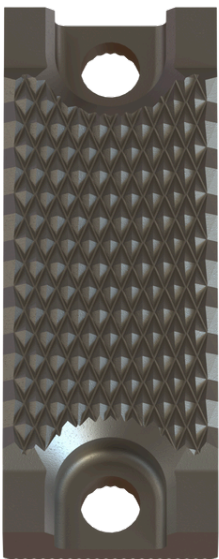
Our tried-and-true PWC Cartridge™ style kelly and safety valves reflect our continued drive to provide tools that reduce downtime, improve safety, and add measurable value.

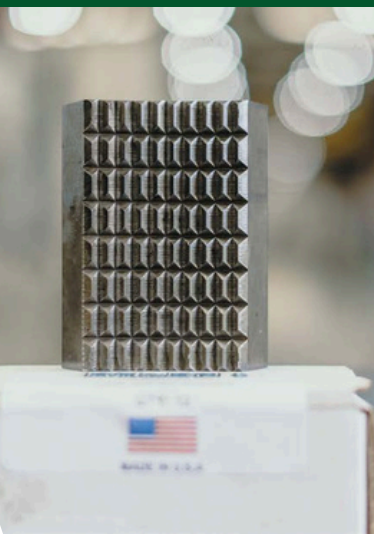
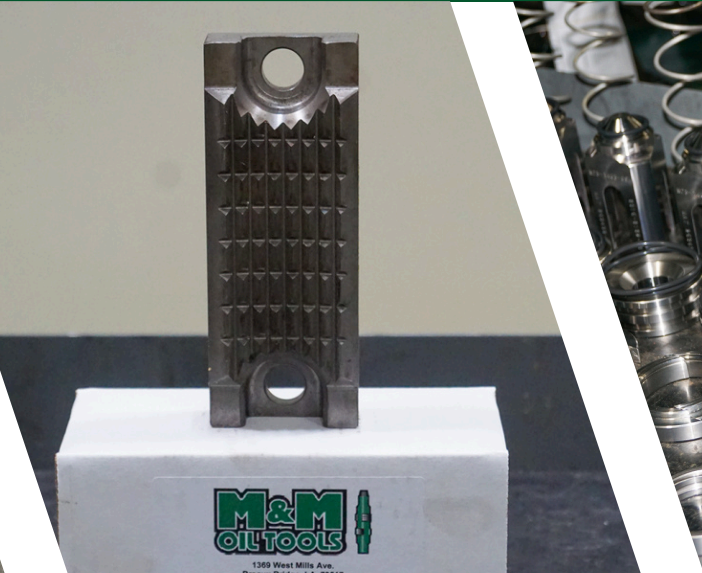
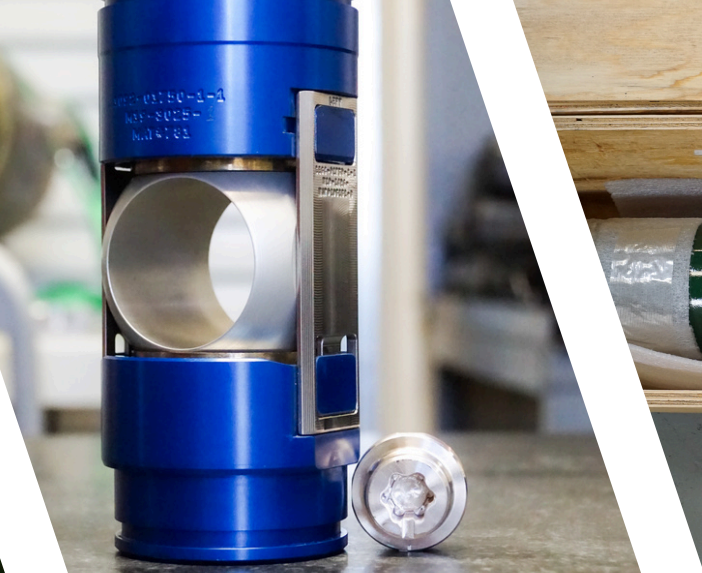
Operating out of our purpose-built facility in Breaux Bridge, Louisiana, we're equipped to meet today's demands with faster turnaround times, tighter quality control, and enhanced testing capabilities. M&M Oil Tools is here to support your success—every job, every time.



FULL DIAMOND TOOTH DIES

- M&M Oil Tools continues its tradition of innovation in die manufacturing with the Full Diamond Tooth Die—engineered to deliver exceptional torque and protect tubulars in even the most demanding drilling environments.
- The Full Diamond Tooth Die achieves torque capabilities exceeding 125,000 ft-lbs while ensuring minimal marking on tubular surfaces. This breakthrough extends tubular service life and makes it a superior choice for Managed Pressure Drilling (MPD) applications.
- M&M's in-house engineering team developed this solution through close collaboration with clients. After extensive design iterations and in-house testing, field trials validated the die's ability to maintain a secure grip without slippage and significantly reduce damage to tubulars.
- Key Features:
 - Engineered for high-torque operations (>125,000 ft-lbs)
 - Minimal marking design preserves tubular integrity
 - Manufactured from premium materials with precise heat-treatment
 - Manufactured for high performance in MPD and other high-demand environments
- For operators seeking a reliable, field-tested die solution that protects their assets and maximizes operational efficiency, the Full Diamond Tooth Die delivers unmatched performance.





M&M OIL TOOLS



“We Are Here To Serve Our Customers!”



+1 (337) 442-6057

1369 West Mills Avenue
Breau Bridge, LA 70517

+1 (877) 240-9564

3547 West 16th Street
Odessa, TX 79763