







# Table of Contents

Company Information .....	4
Trade Mark Information .....	5
Recommended Selection and Usage .....	6
5/8" Wide Tong Dies .....	7
1" Wide Tong Dies .....	8
1-1/4" Wide Tong Dies .....	9
Clincher™ Type Wraparound Tong Dies .....	11
Clincher™ Type Wraparound Backup Dies .....	12
Varco™ Type Handling Tool Inserts .....	13
Varco™ Type Circular Buttons .....	17
BJ™ & Varco BJ™ Type Handling Tool Inserts .....	19
Baash-Ross™ Type DU Inserts .....	23
Baash-Ross™ Type TS-100 Inserts .....	24
Woolley™ Type Inserts .....	25
Kelco™ Type Tuning Tong Dies .....	26
Hydra-Rig™ Type Bowl & Slip Inserts .....	31
Cavins™ Style Full Circle Inserts Type "C", "CHD", & "F" .....	32
Oil Country™ Type "E" Inserts .....	34
Type "C" Safety Clamp Inserts .....	35
Type "T" Safety Clamp Inserts .....	36
Type "MPS" Safety Clamp Inserts .....	36
Type "MP" & "MPR" Safety Clamp Inserts .....	37
Eckel™ Type Tong & Backup Wraparound Dies .....	38



## Company Information

M&M Oil Tools has been established as a North American die and insert manufacturing company. Our traditional business model is based on the accomplishments of our Management and Manufacturing teams. Our company is comprised of individuals who bring to the table well over 100 years of experience in the manufacturing and producing dies and inserts as well as handling and makeup equipment for Oil Country Tubular Goods (OCTG).

Our Principals include our CEO David Buck, founder and former owner of \*Superior Manufacturing & Hydraulics and Precision Die Technologies\* (purchased by McCoy Global in 2007) and inventor of the CLINCHER™ line of tubular makeup equipment. To date David has over 30 patents pertaining to the makeup and handling of OCTG (including the CLINCHER™ Wraparound Die) and 3 Meritorious Awards for Engineering Innovation.



## TRADEMARK INFORMATION

CRA-Grip™ is a trademark of Global Die Technology

Varco™ is a trademark of National Oilwell Varco

Varco BJ™ is a trademark of National Oilwell Varco

Cavins™ is a registered trademark of Cavins Oilwell Tools

GRITFACE™ is a trademark of McCoy Global Inc.

CLINCHER™ is a trademark of McCoy Global Inc.

LOCKJAW™ is a trademark of McCoy Global Inc.

Baash-Ross™ is a trademark of National Oilwell Varco

Hillman-Kelly™ is a trademark of National Oilwell Varco

Web Wilson™ is a trademark of National Oilwell Varco

Kelco™ is a trademark of National Oilwell Varco

BJ™ is a trademark of National Oilwell Varco

AOT™ - Access Oil Tools is a trademark of Forum Energy

Technologies Den-Con™ is a trademark of Den-Con Tool Co.

CDI™ - Custom Die & Inserts is a trademark of National Oilwell Varco

Ortco™ is a trademark of Ortco, Inc.

Eckel™ is a trademark of Eckel Manufacturing, Inc.

Hydra-Shift™ is a trademark of Eckel Manufacturing, Inc.

FARR™ is a trademark of McCoy Global, Inc.

Woolley™ is a trademark of National Oilwell Varco

Oil Country™ is a trademark of Weatherford International

Blohm + Voss™ is a trademark of Forum Energy Technologies Hydra-

Rig™ is a trademark of National Oilwell Varco

Super Chrome™ is a trademark of Sumitomo

Hyper-Chrome™ is a trademark of Kawasaki Steel Corporation







# 1" WIDTH TONG DIES

AVAILABLE IN FOUR GRIPPING SURFACES:

- STANDARD (-0)
- CRA-Grip™ (-CRA)
- DIAMOND (-D)
- FINE PYRAMID (-FP)

1" Standard Tooth Tong Die

1" CRA-Grip™ Tong Die  
Use with Corrosion Resistant Alloy  
(CRA) tubulars

1" Diamond Tooth Tong Die

GDT Standard Tooth #	GDT CRA-Grip™ #	GDT Diamond Tooth #	GDT Fine Tooth Pyramid #	Dimensions (W x H x L)	Weight (lb.)	OEM #
D2-0375-0438-0	D2-0375-0438-CRA	D2-0375-0438-D	D2-0375-0438-FP	1" x 3/8" x 1-7/16"	0.170	1507
D2-0375-1875-0	D2-0375-1875-CRA	D2-0375-1875-D	D2-0375-1875-FP	1" x 3/8" x 1-7/8"	0.180	1506
D2-0375-1937-0	D2-0375-1937-CRA	D2-0375-1937-D	D2-0375-1937-FP	1" x 3/8" x 1-15/16"	0.190	1501
D2-0375-2125-0	D2-0375-2125-CRA	D2-0375-2125-D	D2-0375-2125-FP	1" x 3/8" x 2-1/8"	0.200	1502
D2-0375-2500-0	D2-0375-2500-CRA	D2-0375-2500-D	D2-0375-2500-FP	1" x 3/8" x 2-1/2"	0.210	1503
D2-0375-2625-0	D2-0375-2625-CRA	D2-0375-2625-D	D2-0375-2625-FP	1" x 3/8" x 2-5/8"	0.220	1504
D2-0375-3875-0	D2-0375-3875-CRA	D2-0375-3875-D	D2-0375-3875-FP	1" x 3/8" x 3-7/8"	0.320	1505
D2-0375-4250-0	D2-0375-4250-CRA	D2-0375-4250-D	D2-0375-4250-FP	1" x 3/8" x 4-1/4"	0.350	1508
D2-0375-4500-0	D2-0375-4500-CRA	D2-0375-4500-D	D2-0375-4500-FP	1" x 3/8" x 4-1/2"	0.370	1509
D2-0375-5750-0	D2-0375-5750-CRA	D2-0375-5750-D	D2-0375-5750-FP	1" x 3/8" x 5-3/4"	0.470	1510
D2-0438-3875-0	D2-0438-3875-CRA	D2-0438-3875-D	D2-0438-3875-FP	1" x 7/16" x 3-7/8"	0.380	1511
D2-0500-3875-0	D2-0500-3875-CRA	D2-0500-3875-D	D2-0500-3875-FP	1" x 1/2" x 3-7/8"	0.440	1521
D2-0500-5000-0	D2-0500-5000-CRA	D2-0500-5000-D	D2-0500-5000-FP	1" x 1/2" x 5"	0.560	1522
D2-0532-4500-0	D2-0532-4500-CRA	D2-0532-4500-D	D2-0532-4500-FP	1" x 17/32" x 4-1/2"	0.400	N/A
D2-0563-2500-0	D2-0563-2500-CRA	D2-0563-2500-D	D2-0563-2500-FP	1" x 9/16" x 2-1/2"	0.320	1531
D2-0563-3875-0	D2-0563-3875-CRA	D2-0563-3875-D	D2-0563-3875-FP	1" x 9/16" x 3-7/8"	0.500	1532
D2-0625-3875-0	D2-0563-3875-CRA	D2-0563-3875-D	D2-0563-3875-FP	1" x 5/8" x 3-7/8"	0.550	1541
D2-0688-3875-0	D2-0688-3875-CRA	D2-0688-3875-D	D2-0688-3875-FP	1" x 11/16" x 3-7/8"	0.610	1542
D2-0750-3875-0	D2-0750-3875-CRA	D2-0750-3875-D	D2-0750-3875-FP	1" x 3/4" x 3-7/8"	0.670	1543
D2-0750-4250-0	D2-0750-4250-CRA	D2-0750-4250-D	D2-0750-4250-FP	1" x 3/4" x 4-1/4"	0.690	1508

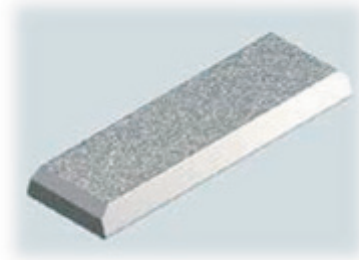
# 1-1/4" WIDTH TONG DIES

AVAILABLE IN FOUR GRIPPING SURFACES:

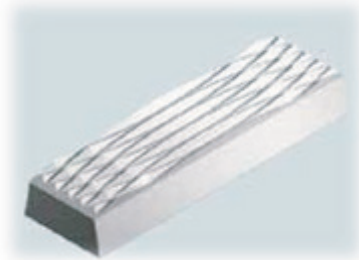
- STANDARD (-0)
- CRA-Grip™ (-CRA)
- Diamond (-D)
- Fine Pyramid (-FP)



1-1/4" Standard Tooth Tong Die



1-1/4" CRA-Grip™ Tong Die  
Use with Corrosion Resistant Alloy  
(CRA) tubulars



1-1/4" Diamond Tooth Tong Die

Standard Tooth #	GDT CRA-Grip™ #	GDT Diamond Tooth #	GDT Fine Tooth Pyramid #	Dimensions (W x H x L)	Weight (lb.)	OEM#
D3-0375-2500-0	D3-0375-2500-CRA	D3-0375-2500-D	D3-0375-2500-FP	1-1/4" x 3/8" x 2-1/2"	0.250	-
D3-0375-3875-0	D3-0375-3875-CRA	D3-0375-3875-D	D3-0375-3875-FP	1-1/4" x 3/8" x 3-7/8"	0.390	1614
D3-0375-5000-0	D3-0375-5000-CRA	D3-0375-5000-D	D3-0375-5000-FP	1-1/4" x 3/8" x 5"	0.500	1610
D3-0375-5875-0	D3-0375-5875-CRA	13-0006-514-D	13-0006-514-FP	1-1/4" x 3/8" x 5-7/8"	0.590	-
D3-0438-2500-0	D3-0438-2500-CRA	D3-0438-2500-D	D3-0438-2500-FP	1-1/4" x 7/16" x 2-1/2"	0.300	1611
D3-0438-3875-0	D3-0438-3875-CRA	D3-0438-3875-D	D3-0438-3875-FP	1-1/4" x 7/16" x 3-7/8"	0.460	1612
D3-0438-5000-0	D3-0438-5000-CRA	D3-0438-5000-D	D3-0438-5000-FP	1-1/4" x 7/16" x 5"	0.600	1617
D3-0438-5875-0	D3-0438-5875-CRA	D3-0438-5875-D	D3-0438-5875-FP	1-1/4" x 7/16" x 5-7/8"	0.710	-
D3-0500-2500-0	D3-0500-2500-CRA	D3-0500-2500-D	D3-0500-2500-FP	1-1/4" x 1/2" x 2-1/2"	0.350	1612
D3-0500-3875-0	D3-0500-3875-CRA	D3-0500-3875-D	D3-0500-3875-FP	1-1/4" x 1/2" x 3-7/8"	0.540	1601
D3-0500-5000-0	D3-0500-5000-CRA	D3-0500-5000-D	D3-0500-5000-FP	1-1/4" x 1/2" x 5"	0.690	1602
D3-0500-5875-0	D3-0500-5875-CRA	D3-0500-5875-D	D3-0500-5875-FP	1-1/4" x 1/2" x 5-7/8"	0.820	1603
D3-0563-2500-0	D3-0563-2500-CRA	D3-0563-2500-D	D3-0563-2500-FP	1-1/4" x 9/16" x 2-1/2"	0.390	1621
D3-0563-3875-0	D3-0563-3875-CRA	D3-0563-3875-D	D3-0563-3875-FP	1-1/4" x 9/16" x 3-7/8"	0.610	1622
D3-0563-5000-0	D3-0563-5000-CRA	D3-0563-5000-D	D3-0563-5000-FP	1-1/4" x 9/16" x 5"	0.780	1623
D3-0563-5875-0	D3-0563-5875-CRA	D3-0563-5875-D	D3-0563-5875-FP	1-1/4" x 9/16" x 5-7/8"	0.920	-
D3-0625-2500-0	D3-0625-2500-CRA	D3-0625-2500-D	D3-0625-2500-FP	1-1/4" x 5/8" x 2-1/2"	0.440	1631
D3-0625-3875-0	D3-0625-3875-CRA	D3-0625-3875-D	D3-0625-3875-FP	1-1/4" x 5/8" x 3-7/8"	0.680	1632
D3-0625-5000-0	D3-0625-5000-CRA	D3-0625-5000-D	D3-0625-5000-FP	1-1/4" x 5/8" x 5"	0.870	1633
D3-0625-5875-0	D3-0625-5875-CRA	D3-0625-5875-D	D3-0625-5875-FP	1-1/4" x 5/8" x 5-7/8"	1.020	1694



## 1-1/4" WIDTH TONG DIES CONTINUED

Standard Tooth #	GDT CRA-Grip™ #	GDT Diamond Tooth #	GDT Fine Tooth Pyramid #	Dimensions (W x H x L)	Weight (lb.)	OEM#
D3-0688-2500-0	D3-0688-2500-CRA	D3-0688-2500-D	D3-0688-2500-FP	1-1/4" x 11/16" x 2-1/2"	0.480	1641
D3-0688-3875-0	D3-0688-3875-CRA	D3-0688-3875-D	D3-0688-3875-FP	1-1/4" x 11/16" x 3-7/8"	0.740	1642
D3-0688-5000-0	D3-0688-5000-CRA	D3-0688-5000-D	D3-0688-5000-FP	1-1/4" x 11/16" x 5"	0.960	1646
D3-0688-5875-0	D3-0688-5875-CRA	D3-0688-5875-D	D3-0688-5875-FP	1-1/4" x 11/16" x 5-7/8"	1.130	1644
D3-0750-3875-0	D3-0750-3875-CRA	D3-0750-3875-D	D3-0750-3875-FP	1-1/4" x 3/4" x 3-7/8"	0.810	1651
D3-0750-5000-0	D3-0750-5000-CRA	D3-0750-5000-D	D3-0750-5000-FP	1-1/4" x 3/4" x 5"	1.050	1693
D3-0750-5875-0	D3-0750-5875-CRA	D3-0750-5875-D	D3-0750-5875-FP	1-1/4" x 3/4" x 5-7/8"	1.230	1649
D3-0813-3875-0	D3-0813-3875-CRA	D3-0813-3875-D	D3-0813-3875-FP	1-1/4" x 13/16" x 3-7/8"	0.880	1661
D3-0813-5000-0	D3-0813-5000-CRA	D3-0813-5000-D	D3-0813-5000-FP	1-1/4" x 13/16" x 5"	1.140	1664
D3-0813-5875-0	D3-0813-5875-CRA	D3-0813-5875-D	D3-0813-5875-FP	1-1/4" x 13/16" x 5-7/8"	1.340	-
D3-0875-3875-0	D3-0875-3875-CRA	D3-0875-3875-D	D3-0875-3875-FP	1-1/4" x 7/8" x 3-7/8"	0.950	1671
D3-0875-5000-0	D3-0875-5000-CRA	D3-0875-5000-D	D3-0875-5000-FP	1-1/4" x 7/8" x 5"	1.230	1673
D3-0875-5875-0	D3-0875-5875-CRA	D3-0875-5875-D	D3-0875-5875-FP	1-1/4" x 7/8" x 5-7/8"	1.450	1672
D3-0938-3875-0	D3-0938-3875-CRA	D3-0938-3875-D	D3-0938-3875-FP	1-1/4" x 15/16" x 3-7/8"	1.020	1681
D3-0938-5000-0	D3-0938-5000-CRA	D3-0938-5000-D	D3-0938-5000-FP	1-1/4" x 15/16" x 5"	1.320	1682
D3-0938-5875-0	D3-0938-5875-CRA	D3-0938-5875-D	D3-0938-5875-FP	1-1/4" x 15/16" x 5-7/8"	1.550	-
D3-1000-3875-0	D3-1000-3875-CRA	D3-1000-3875-D	D3-1000-3875-FP	1-1/4" x 1" x 3-7/8"	1.250	1691
D3-1000-5000-0	D3-1000-5000-CRA	D3-1000-5000-D	D3-1000-5000-FP	1-1/4" x 1" x 5"	1.610	1697
D3-1000-5875-0	D3-1000-5875-CRA	D3-1000-5875-D	D3-1000-5875-FP	1-1/4" x 1" x 5-7/8"	1.800	1692
D3-1063-3875-0	D3-1063-3875-CRA	D3-1063-3875-D	D3-1063-3875-FP	1-1/4" x 1-1/16" x 3-7/8"	1.140	1690
D3-1125-3875-0	D3-1125-3875-CRA	D3-1125-3875-D	D3-1125-3875-FP	1-1/4" x 1-1/8" x 3-7/8"	1.205	-
D3-1125-5000-0	D3-1125-5000-CRA	D3-1125-5000-D	D3-1125-5000-FP	1-1/4" x 1-1/8" x 5"	1.990	1684
D3-1500-5000-0	D3-1500-5000-CRA	D3-1500-5000-D	D3-1500-5000-FP	1-1/4" x 1-1/2" x 5"	2.270	1676

## CLINCHER™ TYPE WRAPAROUND TONG DIES

Tong Size	Model #	Jaws	Size Range of Jaws	Qty Dies	Steel Tooth	CRA-Grip™	Aluminum
3-1/2" STD	CLE3500	CRA-Grip®	CJ-LF-35/CJ-35B	2	DMF-135-XXXX-0	DMF-135-XXXX-CRA	DMF-135-XXXX-AL
5-1/2" STD	CLE5500	CJ-51A/CJ-51B	2-1/16" TO 3-1/2" 3-5/8" TO 5-1/2"	2	DMFT-5500-XXXX-0	DMFT-5500-XXXX-CRA	DMFT-5500-XXXX-AL
5-1/2" L-JAW	CLJ5500	N/A	2-1/16" TO 5-1/2"	2 SIDE	DMK-5500-XXXX-0	DMK-5500-XXXX-CRA	DMK-5500-XXXX-AL
		N/A	2-1/16" TO 5-1/2"	1 BACK	DMK-5501-XXXX-0	DMK-5501-XXXX-CRA	DMK-5501-XXXX-AL
5-1/2" UHT	CLE5500	CJ-55A OLD STYLE	2-1/16" TO 5"	2	DMF-5500-XXXX-0	DMF-5500-XXXX-CRA	DMF-5500-XXXX-AL
		CJ-LF-55A	2-1/16" TO 3-1/2"	2	DMF-5500-XXXX-0	DMF-5500-XXXX-CRA	DMF-5500-XXXX-AL
		CJ-55B	3-5/8" TO 5-1/2"	2	DMK-5501-XXXX-0	DMK-5501-XXXX-CRA	DMK-5501-XXXX-AL
5-1/2" XHT	CLE5500XHT	CJ-LF-59B	2-1/16" TO 5-1/2"	2	DMK-5501-XXXX-0	DMK-5501-XXXX-CRA	-
		CJ-59B	3-1/2" TO 5-1/2"	2	DMK-5501-XXXX-0	DMK-5501-XXXX-CRA	-
5-1/2" CM	CM5500	N/A	2-1/16" TO 5-1/2"	3	CVD-5500-XXXX-0	CVD-5500-XXXX-CRA	CVD-5500-XXXX-AL
7-5/8" UHT	CLE7625	CJ-76A	2-3/8" TO 4-1/2"	2	CVD-4500-XXXX-0	CVD-4500-XXXX-CRA	CVD-4500-XXXX-AL
		CJ-76B	4-3/4" TO 7-5/8"	2	CVD-7625-XXXX-0	CVD-7625-XXXX-CRA	CVD-7625-XXXX-AL
7-5/8" CM	CM7625	N/A	2-3/8" TO 7-5/8"	3	CVD-7625-XXXX-0	CVD-7625-XXXX-CRA	CVD-7625-XXXX-AL
7-5/8" L-JAW	CLJ7625	N/A	2-3/8" TO 7-5/8"	3	CVD-7625-XXXX-0	CVD-7625-XXXX-CRA	CVD-7625-XXXX-AL
8-5/8" DP	CLE8625DP	CJ-76C	5-1/2" TO 7-5/8"	2	CVD-7625-XXXX-0	CVD-7625-XXXX-CRA	CVD-7625-XXXX-AL
8-5/8" DP	CLE8625DP	CJ-86A	5-1/2" TO 8-5/8"	2	CVD-8625-XXXX-0	CVD-8625-XXXX-CRA	CVD-8625-XXXX-AL
8-5/8" DP	CLE8625DP	CJ-LF-76D	2-3/8" TO 8-1/2"	2	CVD-5500-XXXX-0	CVD-5500-XXXX-CRA	CVD-5500-XXXX-AL
8-5/8" DP	CLE8625DP	CJ-LF-86B	5-1/2" TO 8-5/8"	2	CVD-8625-XXXX-0	CVD-8625-XXXX-CRA	CVD-8625-XXXX-AL
10-3/4"	CLE10750	CJ-10A	8-5/8" TO 10-3/4"	2	DMF-1075-XXXX-0	DMF-1075-XXXX-CRA	-
10-3/4"	CLE10750	CJ-LF-10A	2-3/8" TO 7-5/8"	2	DMF-1075-XXXX-0	DMF-1075-XXXX-CRA	-
14"	CLE14000	CJ-LF-14A	4-1/2" TO 7-5/8"	2	CVD-7625-XXXX-0	CVD-7625-XXXX-CRA	CVD-7625-XXXX-AL
14"	CLE14000	CJ-LF-14B	7-5/8" TO 10-3/4"	2	CVDN-1075-XXXX-0	CVDN-1075-XXXX-CRA	CVDN-1075-XXXX-AL
14"	CLE14000	CJ-LF-14C	7-5/8" TO 11-3/4"	2	DMFCV-1175-XXXX-0	DMFCV-1175-XXXX-CRA	DMFCV-1175-XXXX-AL
14"	CLE14000	CJ-14A	10-3/4" TO 14"	2	DMF-1400-XXXX-0	DMF-1400-XXXX-CRA	N/A
14" DP	CLE14000DP	CJ-14X	9-5/8" TO 14"	2	DMF-1400-XXXX-0	DMF-1400-XXXX-CRA	N/A
	CLE14000DP	CJ-LF-14X	7-5/8" TO 11-3/4"	2	DMFCV-1175-XXXX-0	DMFCV-1175-XXXX-CRA	N/A
	CLE14000DP	CJ-86A	5-1/2" TO 8-5/8"	2	CVD-8625-XXXX-0	CVD-8625-XXXX-CRA	N/A

\*XXXX IS THE OUTSIDE DIAMETER OF THE PIPE

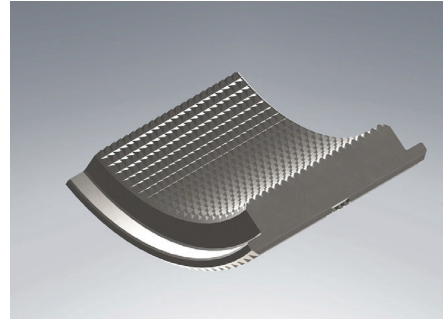
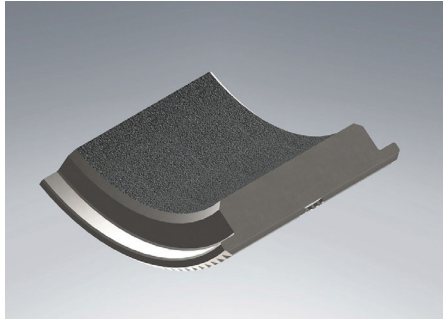
\*CLINCHER™ IS A TRADEMARK OF MCCOY GLOBAL INC.

\*LOCKJAW™ IS A TRADEMARK OF MCCOY GLOBAL INC.

\*REPRESENTS MCCOY GLOBAL INC. OEM MODELS



## CLINCHER™ WRAPAROUND BACKUP DIES



Tong Size	CLINCHER®* OEM Model #	Qty of Dies	Steel Tooth	CRA-Grip™	Aluminum
4" LOCKJAW™	BUCS4000	3	CVD-4000-XXXX-0	CVD-4000-XXXX-CRA	CVD-4000-XXXX-AL
4-1/2" LOCKJAW™	BUCS4500*	3	CVDT-4500-XXXX-0	CVDT-4500-XXXX-CRA	CVDT-4500-XXXX-AL
4-1/2" STD*	BUC4000*	3	CVD-4500-XXXX-0	CVD-4500-XXXX-CRA	CVD-4500-XXXX-AL
5-1/2" STD*	BUCL5500*	3	CVDM-5500-XXXX-0	CVDM-5500-XXXX-CRA	CVDM-5500-XXXX-AL
5-1/2" LOCKJAW™	BUCS5500*	2 SIDE	DMK-5500-XXXX-0	DMK-5500-XXXX-CRA	DMK-5500-XXXX-AL
		1 BACK	DMK-5501-XXXX-0	DMK-5500-XXXX-CRA	DMK-5500-XXXX-AL
5" UHT*	BUC5500*	3	CVD-5500-XXXX-0	CVD-5500-XXXX-CRA	CVD-5500-XXXX-AL
5-1/2" DRILLPIPE*	BUCD5500*	3	CVD-5500-XXXX-0	CVD-5500-XXXX-CRA	CVD-5500-XXXX-AL
5-1/2" XHT*	BUCD55XHT*	3	CVD-5500-XXXX-0	CVD-5500-XXXX-CRA	CVD-5500-XXXX-AL
6-1/4" LOCKJAW™	BUCS6250*	2 SIDE	CVDT-6250-XXXX-0	CVDT-6250-XXXX-CRA	CVDT-6250-XXXX-AL
		1 BACK	CVDT-6251-XXXX-0	CVDT-6251-XXXX-CRA	CVDT-6251-XXXX-AL
6-1/4" UHT*	BUC6250*	3	CVD-7625-XXXX-0	CVD-7625-XXXX-CRA	CVD-7625-XXXX-AL
6-3/8" STD*	BUC6375*	3	CVD-6375-XXXX-0	CVD-6375-XXXX-CRA	CVD-6375-XXXX-AL
7-5/8" UHT*	BUC7625*	3	CVD-7625-XXXX-0	CVD-7625-XXXX-CRA	CVD-7625-XXXX-AL
7-5/8" LOCKJAW™	BUCS7625*	3	CVD-7625-XXXX-0	CVD-7625-XXXX-CRA	CVD-7625-XXXX-AL
8-5/8" UHT*	BUC8625*	3	CVD-8625-XXXX-0	CVD-8625-XXXX-CRA	CVD-8625-XXXX-AL
8-5/8" DRILLPIPE*	BUCDP8500*	3	CVD-8625-XXXX-0	CVD-8625-XXXX-CRA	CVD-8625-XXXX-AL
11-3/4" LOCKJAW™	BUCS11750-01*	3 each 7-5/8" TO 11-3/4"	DMF-10750-XXXX-0		
11-3/4" LOCKJAW™	BUCS11750-01*	3 each 4-1/2" TO 7-5/8"	CVD-7625-XXXX-0	CVD-7625-XXXX-CRA	CVD-7625-XXXX-AL
11-3/4" LOCKJAW™	BUCS11750-01*	3 each 2-3/8" TO 4-1/2"	CVD-4500-XXXX-0	CVD-4500-XXXX-CRA	CVD-4500-XXXX-AL
15" LOCKJAW™	BUCS15000*	3 each 5-1/2" TO 8-5/8"	CVD-8625-XXXX-0	CVD-8625-XXXX-CRA	CVD-8625-XXXX-AL
15" LOCKJAW™	BUCS15000*	3 each 8-7/8" TO 15"	CVD-1500-XXXX-0	CVD-1500-XXXX-CRA	CVD-1500-XXXX-AL

\*XXXX IS THE OUTSIDE DIAMETER OF THE PIPE

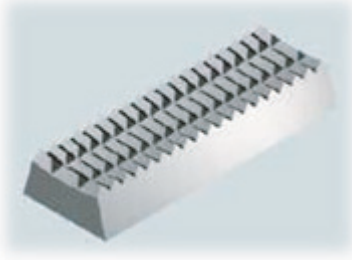
\*CLINCHER™ IS A TRADEMARK OF MCCOY GLOBAL INC.

\*LOCKJAW™ IS A TRADEMARK OF MCCOY GLOBAL INC.

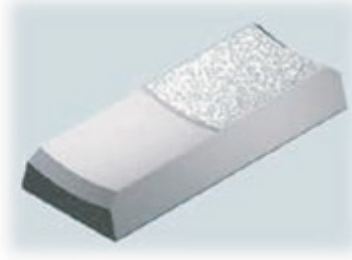
\*REPRESENTS MCCOY GLOBAL INC. OEM MODELS

## VARCO™ TYPE HANDLING TOOL INSERTS

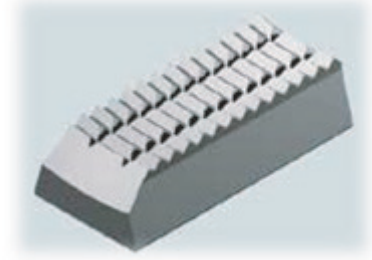
- STANDARD (-0)
- CRA-Grip™ (-CRA)
- Fine Tooth (-F)
- Beveled (-B)



VARCO® Standard Tooth Insert



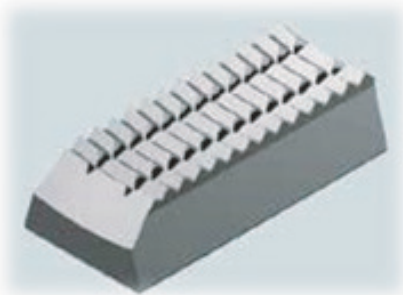
VARCO® CRA-Grip™ Insert  
Use with Corrosion Resistant Alloy (CRA) tubulars



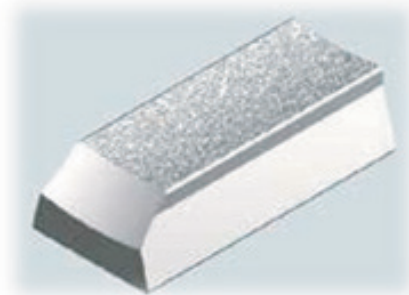
VARCO® Beveled (Reducer) Insert

GDT Standard #	GDT CRA-Grip™ #	Tool Size	Pipe Size	Description	OEM Ref. #	(B+V) Ref. #
VA-2160-0	VA-2160-CRA	3-1/2"	2-3/8"	Reducer	2160	80110
VA-2161-0	VA-2161-CRA	3-1/2"	2-7/8"	Reducer	2161	80111
VA-2162-0	VA-2162-CRA	3-1/2"	3-1/2"	Basic	2162	80112
VA-2163-0	VA-2163-CRA	4-1/2"	3-1/2"	Reducer	2163	80113
VA-2164-0	VA-2164-CRA	4-1/2"	4"	Reducer	2164	80114
VA-2165-0	VA-2165-CRA	4-1/2"	4-1/2"	Basic	2165	80115
VA-2168-0	VA-2168-CRA	5"	4"	Reducer	2168	80118
VA-2166-0	VA-2166-CRA	5"	4-1/2"	Reducer	2166	80116
VA-2167-0	VA-2167-CRA	5"	5"	Basic	2167	80117
VA-2168-0	VA-2168-CRA	5-1/2"	4-1/2"	Reducer	2168	80118
VA-2169-0	VA-2169-CRA	5-1/2"	5"	Reducer	2169	80119
VA-2170-0	VA-2170-CRA	5-1/2"	5-1/2"	Basic	2170	80120
VA-2168-0	VA-2168-CRA	7"	6"	Reducer	2168	80118
VA-2172-0	VA-2172-CRA	7"	6-5/8"	Reducer	2172	80122
VA-2173-0	VA-2173-CRA	7"	7"	Basic	2173	80123
VA-2632-0	VA-2632-CRA	7-5/8"	6-5/8"	Reducer	2632	-
VA-2623-0	VA-2623-CRA	7-5/8"	7"	Reducer	2623	-
VA-2652-0	VA-2652-CRA	7-5/8"	7-1/8"	Reducer	2652	-
VA-2633-0	VA-2633-CRA	7-5/8"	7-5/8"	Basic	2633	-

GDT Standard #	GDT CRA-Grip™ #	Tool Size	Pipe Size	Description	OEM Ref. #	(B+V) Ref. #
VA-2649-0	VA-2649-CRA	7-5/8"	7-3/4"	Oversize	2649	-
VA-2640-0	VA-2640-CRA	9-5/8"	8-5/8"	Reducer	2640	-
VA-2650-0	VA-2650-CRA	9-5/8"	8-3/4"	Reducer	2650	-
VA-2633-0	VA-2633-CRA	9-5/8"	9-5/8"	Basic	2633	-
VA-2649-0	VA-2649-CRA	9-5/8"	9-3/4" to 9-7/8"	Oversize	2649	-
VA-2640-0	VA-2640-CRA	11-3/4"	10-3/4"	Reducer	2640	-
VA-2637-0	VA-2637-CRA	11-3/4"	11-3/4"	Basic	2637	-
VA-2651-0	VA-2651-CRA	11-3/4"	11-7/8"	Oversize	2651	-
VA-2636-0	VA-2636-CRA	13-3/8"	12-3/4"	Reducer	2636	-
VA-2637-0	VA-12637-CRA	13-3/8"	13-3/8"	Basic	2637	-
VA-2649-0	VA-2649-CRA	13-3/8"	13-1/2"	Oversize	2649	-
VA-2657-0	VA-2657-CRA	14"	12-3/4"	Reducer	2657	-
VA-2656-0	VA-2656-CRA	14"	12-7/8"	Reducer	2656	-
VA-2636-0	VA-2636-CRA	14"	13-3/8"	Reducer	2636	-
VA-2652-0	VA-2652-CRA	14"	13-1/2"	Reducer	2652	-
VA-2653-0	VA-2653-CRA	14"	13-5/8"	Reducer	2653	-
VA-2655-0	VA-2655-CRA	14"	13-3/4"	Reducer	2655	-
VA-2635-0	VA-2635-CRA	14"	14"	Basic	2635	-
VA-2635-0	VA-2635-CRA	16"	16"	Basic	2635	-
VA-2638-0	VA-2638-CRA	20"	18-5/8"	Reducer	2638	-
VA-2635-0	VA-2635-CRA	20"	20"	Basic	2635	-
VA-2635-0	VA-2635-CRA	24"	24"	Basic	2635	-



VARCO \* Beveled Standard Tooth Insert



VARCO \* Beveled CRA-Grip™ Insert for use with Corrosion Resistant Alloy (CRA) tubulars

## QUANTITIES REQUIRED VARCO

## ® ROTARY SLIPS

VARCO * Tool Size	SDS	SDHL	SDML	SDM	SDXL	SDL
3-1/2"	24	-	30	30	-	36
4-1/2"	36	-	45	45	54	54
5"	-	-	45	45	54	54
5-1/2"	-	45	45	45	54	54
7"	-	-	-	-	72	60

## QUANTITIES REQUIRED VARCO

## ® POWER SLIPS

VARCO * Tool Size	Pipe Size	PS-15	PS-16
4-1/2"	3-1/2"	32/16B	32-16B
4-1/2"	4"	32/16B	32/16B
4-1/2"	4-1/2"	48	48
5-1/2"	4-1/2"	32/16B	32/16B
5-1/2"	5	32/16B	32/16B
5-1/2"	5-1/2"	48	48
7-5/8"	6-5/8"	48/24B	48/24B

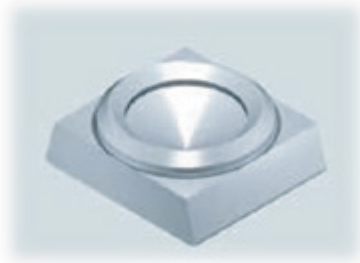


## QUANTITIES REQUIRED VARCO

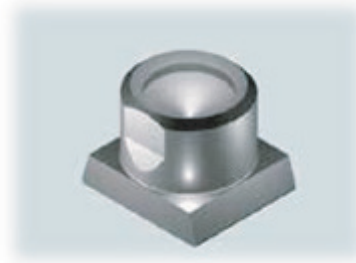
## ® CASING ELEVATORS

VARCO ® Tool Size	Pipe Size	200 Ton 7-5/8"	350 Ton 14"	500 Ton 14"	750 Ton 14"	1000 Ton 24"	500 Ton 24"	750 Ton 24"
3-1/2"	2-3/8"	12/12B	-	-	-	-	-	-
3-1/2"	2-7/8"	12/12B	-	-	-	-	-	-
3-1/2"	3-1/2"	24B	-	-	-	-	-	-
4-1/2"	3-1/2"	16/16B	-	-	-	-	-	-
4-1/2"	4"	16/16B	-	-	-	-	-	-
4-1/2"	4-1/2"	32	-	-	-	-	-	-
5-1/2"	4-1/2"	16/16B	24/16B	32/16B	-	-	-	-
5-1/2"	5"	16/16B	24/16B	32/16B	-	-	-	-
5-1/2"	5-1/2"	32	40	48	-	-	-	-
7"	7"	48	60	72	-	-	-	-
7-5/8"	6-5/8"	24/24B	36/24B	48/24B	60/24B	-	-	-
7-5/8"	7"	24/24B	36/24B	48/24B	60/24B	-	-	-
7-5/8"	7-1/8"	24/24B	36/24B	48/24B	60/24B	-	-	-
7-5/8"	7-5/8"	48	60	72	84	-	-	-
7-5/8"	7-3/4"	48	60	72	84	-	-	-
9-5/8"	8-5/8"	-	48/32B	64/32B	80/32B	96/24B	-	-
9-5/8"	8-3/4"	-	48/32B	64/32B	80/32B	96/24B	-	-
9-5/8"	9-5/8"	-	80	96	112	120	-	-
9-5/8"	9-3/4"	-	80	96	112	120	-	-
9-5/8"	9-7/8"	-	80	96	112	120	-	-
11-3/4"	10-3/4"	-	60/40B	80/40B	100/40B	144/36B	-	-
11-3/4"	11-3/4"	-	100	120	140	180	-	-
11-3/4"	11-7/8"	-	100	120	140	180	-	-
13-3/8"	12-3/4"	-	100	120	140	180	-	-
13-3/8"	13-3/8"	-	100	120	140	180	-	-
13-3/8"	13-1/2"	-	100	120	140	180	-	-
14"	13-1/2"	-	60/40B	80/40B	100/40B	192/48B	-	-
14"	13-5/8"	-	60/40B	80/40B	100/40B	192/48B	-	-
14"	13-3/8"	-	60/40B	80/40B	100/40B	192/48B	-	-
14"	13-3/4"	-	60/40B	80/40B	100/40B	192/48B	-	-
14"	14"	-	100	120	140	240	-	-
16"	16"	-	-	180	210	300	180	210
20"	18-5/8"	-	-	-	-	720	420	510
20"	20"	-	-	180	210	300	180	210
24"	24"	-	-	180	210	300	180	210

## VARCO<sup>®</sup> TYPE CIRCULAR BUTTONS



Circular Button for VARCO<sup>®</sup> Tool



Circular Button (Reducer) for VARCO<sup>®</sup> Tool

GDT Part #	Description	OEM Ref. #	Blohm + Voss (B+V) Ref. #
GDT-2513	5-1/2" x 7" Circular Button for DCS-LD/C slip	2513	-
GDT-2619	7" Circular Button for VARCO <sup>®</sup> Casing Slip CMS-XL	2619	80150
GDT-2620	4" to 4-1/2" & 5-1/2" to 7" Button for VARCO <sup>®</sup> Drill Collar Slips	2620	80151
GDT-2625	11" x 12-3/4" Circular Button for VARCO <sup>®</sup> Drill Collar Slips	2625	80152
GDT-2626	18-5/8" Circular Button for VARCO <sup>®</sup> Casing Slip CMS-XL	2626	80153
GDT-2627	8-1/2" to 10" Button for VARCO <sup>®</sup> Drill Collar Slips	2627	80154
GDT-2628	3" to 4" & 4-1/2" to 6" Button for VARCO <sup>®</sup> Drill Collar Slips	2628	80155
GDT-2630	6-3/4" to 9-1/2" & 8" to 9-1/2" & 12" to 14" Button for VARCO <sup>®</sup> Drill Collar Slips	2630	80156
GDT-2631	7-5/8"; 8-5/8"; 9-5/8"; 10-3/4"; 13-3/8" Button for VARCO <sup>®</sup> Casing Slip CMS-XL	2631	80157
GDT-13868	1-3/8" Circular Button for VARCO <sup>®</sup> Casing Slip	13868	80158

## QUANTITIES REQUIRED VARCO<sup>®</sup> DRILL COLLAR SLIPS (DCS)

Tool Size	GDT-2513	GDT-2620	GDT-2625	GDT-2626	GDT-2627	GDT-2628	GDT-2630
3" to 4" DCS-S	-	-	-	-	-	49	-
4" to 4-7/8" DCS-S	-	49	-	-	-	-	-
4-1/2" to 6" DCS-R	-	-	-	-	-	63	-
5-1/2" to 7" DCS-R	-	63	-	-	-	-	-
5-1/2" to 7" DCS-L	88	-	-	-	-	-	-
6-3/4" to 8-1/4" DCS-L	-	-	-	-	-	-	88
8" to 9-1/2" DCS-L	-	-	-	-	-	-	96
8-1/2" to 10" DCS-L	-	-	-	-	104	-	-
9-1/4" to 11-1/4" DCS-L	-	-	-	-	-	-	112
11" to 12-3/4" DCS-L	-	-	136	-	-	-	-
12" to 14" DCS-L	-	-	-	-	-	-	136



## QUANTITIES REQUIRED VARCO

## ® CASING SLIPS (CMS-XL)

Tool Size	GDT-2619	GDT-2626	GDT-2627	GDT-2628	GDT-2630	GDT-2631	GDT-13868
6-5/8"	-	-	-	144	-	-	-
7"	144	-	-	-	-	-	-
7-5/8"	-	-	-	-	144	-	-
8-5/8"	-	-	-	-	156	-	-
9-5/8"	-	-	-	-	168	-	-
10-3/4"	-	-	-	-	180	-	-
11-3/4"	-	-	204	-	-	-	-
13-3/8"	-	-	-	-	216	-	-
16"	-	-	-	-	-	252	-
18-5/8"	-	300	-	-	-	-	-
20"	-	-	-	-	-	312	-
22"	-	-	-	-	-	-	360
24"	-	-	-	-	-	360	-
26"	-	-	-	-	-	396	-
28"	-	-	-	-	-	-	432
30"	-	-	-	-	-	444	-

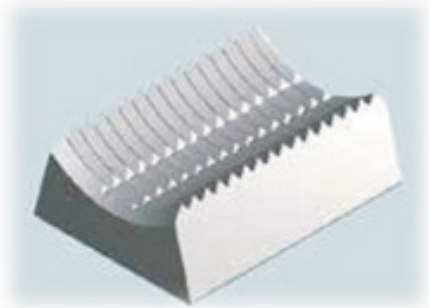
## CRA-Grip™ Buttons Required VARCO

## ® Casing Slips (CMS-XL Only)

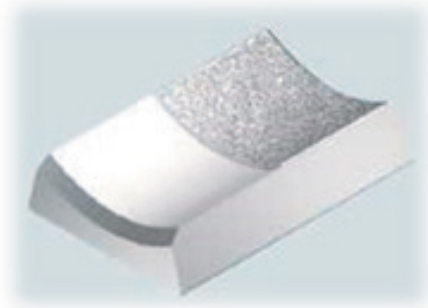
Tool Size	GDT-2619-CRA	GDT-2626-CRA	GDT-2627-CRA	GDT-2628-CRA	GDT-2630-CRA	GDT-2631-CRA
6-5/8"	-	-	-	72	-	-
7"	72	-	-	-	-	-
7-5/8"	-	-	-	-	72	-
8-5/8"	-	-	-	-	78	-
9-5/8"	-	-	-	-	84	-
10-3/4"	-	-	-	-	90	-
11-3/4"	-	-	102	-	-	-
13-3/8"	-	-	-	-	108	-
16"	-	-	-	-	-	126
18-5/8"	-	150	-	-	-	-
20"	-	-	-	-	-	156
24"	-	-	-	-	-	180
26"	-	-	-	-	-	198
30"	-	-	-	-	-	222

## INSERTS FOR BJ <sup>®</sup> HANDLING TOOLS

- STANDARD TOOTH (-0)
- CRA-Grip <sup>™</sup> (-CRA)
- UNIDIRECTIONAL (-UNI)
- TOP & BOTTOM BEVELED (-TB) & (-BB)

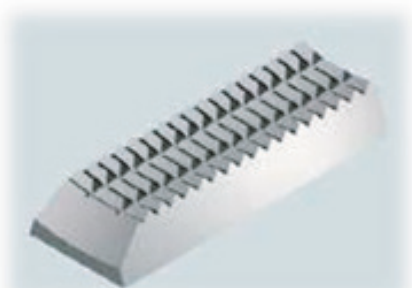


Standard Tooth Insert for 2-7/8" YT, HYT, MYT, 50T & 100T Spiders

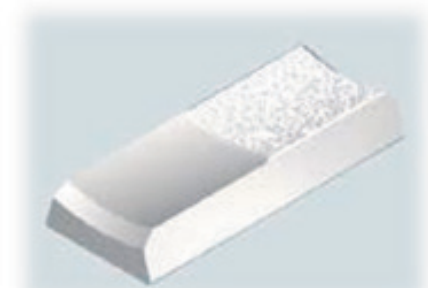


CRA-Grip <sup>™</sup> Insert for use with Corrosion Resistant Alloy (CRA) tubulars

GDT Standard Tooth #	GDT CRA-Grip <sup>™</sup> #	Tool Size	Pipe Size	Description	OEM Ref. #	Blohm + Voss (B+V) Ref. #
MY-24773-0	MY-24773-CRA	2-7/8"	2-7/8"	Basic	24773	671026
MY-29255-0	MY-29255-CRA	2-7/8"	2-3/8"	Reducer	29255	671025
YT-30358-0	YT-30358-CRA	3-1/2"	2-7/8"	Reducer	30358	-
YT-24774-0	YT-24774-CRA	3-1/2"	3-1/2"	Basic	24774	671027



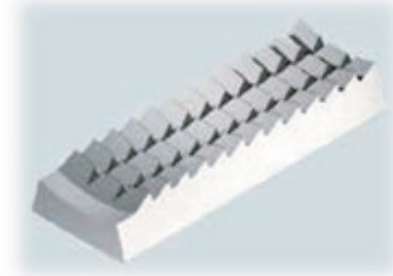
BJ <sup>®</sup> Standard Tooth Insert 3-1/2" YT, HYT, & MYT 50 Ton & 100 Ton Spiders



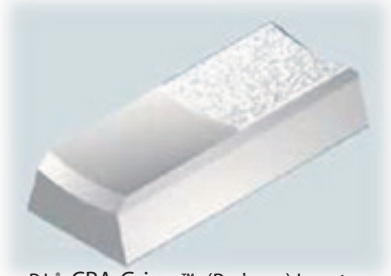
BJ <sup>®</sup> CRA-Grip <sup>™</sup> Insert 3-1/2" YT, HYT, MYT, 50 Ton, & 100 Ton Spiders for use with Corrosion Resistant Alloy (CRA) tubulars

## QTY REQUIRED BJ <sup>®</sup> YT, MYT, & HYT

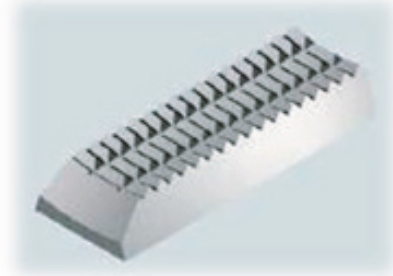
BJ <sup>®</sup> Tool Size	YT	MYT	HYT
2-7/8" (MY)	12	8	16
3-1/2" (YT)	24	8	32



BJ \* Standard Tooth Insert



BJ \* CRA-Grip <sup>™</sup> (Reducer) Insert  
Use with Corrosion Resistant Alloy  
(CRA) tubulars



BJ \* Bidirectional Beveled Insert

## INSERTS BJ <sup>®</sup> YC, HYC, MYC, CASING ELEVATORS, ETC.

GDT Bi-Dir. Tooth #	GDT CRA-Grip <sup>™</sup> #	GDT Uni-Dir. Tooth #	Tool Size	Pipe Size	Description	OEM Ref. #	Blohm + Voss (B+V) Ref. #
BJ-24777-0	BJ-24777-CRA	BJ-24777-UNI	3-1/2"	2-3/8"	Reducer	24777	351001
BJ-25780-0	BJ-25780-CRA	BJ-25780-UNI	3-1/2"	2-7/8"	Reducer	25780	350602
BJ-16441-0	BJ-16441-CRA	BJ-16441-UNI	3-1/2"	3-1/2"	Basic	16441	350103
BJ-16442-0	BJ-16442-CRA	BJ-16442-UNI	4"	4"	Basic	16442	-
BJ-24779-0	BJ-24779-CRA	BJ-24779-UNI	4-1/2"	3-1/2"	Reducer	24779	350903
BJ-24781-0	BJ-24781-CRA	BJ-24781-UNI	4-1/2"	4"	Reducer	24781	350504
BJ-16408-0	BJ-16408-CRA	BJ-16408-UNI	4-1/2"	4-1/2"	Basic	16408	350105
BJ-24785-0	BJ-24785-CRA	BJ-24785-UNI	5-1/2"	4-1/2"	Reducer	24785	350905
BJ-24783-0	BJ-24783-CRA	BJ-24783-UNI	5-1/2"	5"	Reducer	24783	350506
BJ-16407-0	BJ-16407-CRA	BJ-16407-UNI	5-1/2"	5-1/2"	Basic	16407	350107
BJ-29254-0	BJ-29254-CRA	BJ-29254-UNI	7"	5-3/4"	Reducer	29254	-
BJ-351008-0	BJ-351008-CRA	BJ-351008-UNI	7"	5-7/8"	Reducer	-	351008
BJ-25474-0	BJ-25474-CRA	BJ-25474-UNI	7"	6"	Reducer	25474	-
BJ-24748-0	BJ-24748-CRA	BJ-24748-UNI	7"	6-5/8"	Reducer	24748	350409
BJ-16407-0	BJ-16407-CRA	BJ-16407-UNI	7"	7"	Basic	16407	350110
BJ-25474-0	BJ-25474-CRA	BJ-25474-UNI	7-5/8"	6-5/8"	Reducer	25474	350909
BJ-26750-0	BJ-26750-CRA	BJ-26750-UNI	7-5/8"	7"	Reducer	26750	356625
BJ-16407-0	BJ-16407-CRA	BJ-16407-UNI	7-5/8"	7-5/8"	Basic	16407	350111
BJ-32477-0	BJ-32477-CRA	BJ-32477-UNI	7-5/8"	7-3/4"	Over-size32477	350011	350011
BJ-25474-0	BJ-25474-CRA	BJ-25474-UNI	8-5/8"	7-5/8"	Reducer	25474	-
BJ-34029-0	BJ-34029-CRA	BJ-34029-UNI	8-5/8"	7-3/4"	Reducer	34029	-
BJ-15660-0	BJ-15660-CRA	BJ-15660-UNI	8-5/8"	8-5/8"	Basic	15660	-
BJ-32477-0	BJ-32477-CRA	BJ-32477-UNI	8-5/8"	8-3/4"	Over-size32477	-	-
BJ-25474-0	BJ-25474-CRA	BJ-25474-UNI	8-7/8"	7-7/8"	Reducer	25474	-
BJ-34029-0	BJ-34029-CRA	BJ-34029-UNI	8-7/8"	8"	Reducer	34029	-
BJ-39289-0	BJ-39289-CRA	BJ-39289-UNI	8-7/8"	8-1/8"	Reducer	39289	-
BJ-32700-0	BJ-32700-CRA	BJ-32700-UNI	8-7/8"	8-1/4"	Reducer	32700	-
BJ-39288-0	BJ-39288-CRA	BJ-39288-UNI	8-7/8"	8-3/8"	Reducer	39288	-

GDT Bi-Dir. Tooth #	GDT CRA-Grip™ #	GDT Uni-Dir. Tooth #	Tool Size	Pipe Size	Description	OEM Ref. #	Blohm + Voss (B+V) Ref. #
BJ-39287-0	BJ-39287-CRA	BJ-39287-UNI	8-7/8"	8-1/2"	Reducer	39287	-
BJ-39286-0	BJ-39286-CRA	BJ-39286-UNI	8-7/8"	8-5/8"	Reducer	39286	-
BJ-39285-0	BJ-39285-CRA	BJ-39285-UNI	8-7/8"	8-3/4"	Reducer	39285	-
BJ-15660-0	BJ-15660-CRA	BJ-15660-UNI	8-7/8"	8-7/8"	Basic	15660	350111
BJ-25474-0	BJ-25474-CRA	BJ-25474-UNI	9-5/8"	8-5/8"	Reducer	25474	350911
BJ-34029-0	BJ-34029-CRA	BJ-34029-UNI	9-5/8"	8-3/4"	Reducer	34029	-
BJ-15660-0	BJ-15660-CRA	BJ-15660-UNI	9-5/8"	9-5/8"	Basic	15660	350111
BJ-32477-0	BJ-32477-CRA	BJ-32477-UNI	9-5/8"	9-3/4"	Oversize	32477	-
BJ-33249-0	BJ-33249-CRA	BJ-33249-UNI	10-3/4"	9-5/8"	Reducer	33249	351011
BJ-34029-0	BJ-34029-CRA	BJ-34029-UNI	10-3/4"	9-7/8"	Reducer	34029	350811
BJ-15660-0	BJ-15660-CRA	BJ-15660-UNI	10-3/4"	10-3/4"	Basic	15660	350112
BJ-25474-0	BJ-25474-CRA	BJ-25474-UNI	10-7/8"	9-7/8"	Reducer	25474	-
BJ-34029-0	BJ-34029-CRA	BJ-34029-UNI	10-7/8"	10"	Reducer	34029	-
BJ-39289-0	BJ-39289-CRA	BJ-39289-UNI	10-7/8"	10-1/8"	Reducer	39289	-
BJ-32700-0	BJ-32700-CRA	BJ-32700-UNI	10-7/8"	10-1/4"	Reducer	32700	-
BJ-39288-0	BJ-39288-CRA	BJ-39288-UNI	10-7/8"	10-3/8"	Reducer	39288	-
BJ-39287-0	BJ-39287-CRA	BJ-39287-UNI	10-7/8"	10-1/2"	Reducer	39287	-
BJ-39286-0	BJ-39286-CRA	BJ-39286-UNI	10-7/8"	10-5/8"	Reducer	39286	-
BJ-39285-0	BJ-39285-CRA	BJ-39285-UNI	10-7/8"	10-3/4"	Reducer	39285	-
BJ-15660-0	BJ-15660-CRA	BJ-15660-UNI	10-7/8"	10-7/8"	Basic	15660	-
BJ-25474-0	BJ-25474-CRA	BJ-25474-UNI	11-3/4"	10-3/4"	Reducer	25474	-
BJ-34029-0	BJ-34029-CRA	BJ-34029-UNI	11-3/4"	10-7/8"	Reducer	34029	-
BJ-15660-0	BJ-15660-CRA	BJ-15660-UNI	11-3/4"	11-3/4"	Basic	15660	350112
BJ-32477-0	BJ-32477-CRA	BJ-32477-UNI	11-3/4"	11-7/8"	Oversize	32477	350012
BJ-25474-0	BJ-25474-CRA	BJ-25474-UNI	12-1/2"	11-1/2"	Reducer	25474	-
BJ-34029-0	BJ-34029-CRA	BJ-34029-UNI	12-1/2"	11-5/8"	Reducer	34029	-
BJ-39289-0	BJ-39289-CRA	BJ-39289-UNI	12-1/2"	11-3/4"	Reducer	39289	-
BJ-32700-0	BJ-32700-CRA	BJ-32700-UNI	12-1/2"	11-7/8"	Reducer	32700	-
BJ-39288-0	BJ-39288-CRA	BJ-39288-UNI	12-1/2"	12"	Reducer	39288	-
BJ-39287-0	BJ-39287-CRA	BJ-39287-UNI	12-1/2"	12-1/8"	Reducer	39287	-
BJ-39286-0	BJ-39286-CRA	BJ-39286-UNI	12-1/2"	12-1/4"	Reducer	39286	-
BJ-39285-0	BJ-39285-CRA	BJ-39285-UNI	12-1/2"	12-3/8"	Reducer	39285	-
BJ-15660-0	BJ-15660-CRA	BJ-15660-UNI	12-1/2"	12-1/2"	Basic	15660	350112
BJ-25474-0	BJ-25474-CRA	BJ-25474-UNI	12-3/4"	11-3/4"	Reducer	25474	-
BJ-34029-0	BJ-34029-CRA	BJ-34029-UNI	12-3/4"	11-7/8"	Reducer	34029	-
BJ-15660-0	BJ-15660-CRA	BJ-15660-UNI	12-3/4"	12-3/4"	Basic	15660	350112
BJ-32477-0	BJ-32477-CRA	BJ-32477-UNI	12-3/4"	12-7/8"	Oversize	32477	-
BJ-34029-0	BJ-34029-CRA	BJ-34029-UNI	13-3/8"	12-1/2"	Reducer	34029	-
BJ-32700-0	BJ-32700-CRA	BJ-32700-UNI	13-3/8"	12-3/4"	Reducer	32700	350612
BJ-32477-0	BJ-32477-CRA	BJ-32477-UNI	13-3/8"	13-1/2"	Oversize	32477	-



GDT Bi-Dir. Tooth #	GDT CRA-Grip™ #	GDT Uni-Dir. Tooth #	Tool Size	Pipe Size	Description	OEM Ref. #	Blohm + Voss (B+V) Ref. #
BJ-15660-0	BJ-15660-CRA	BJ-15660-UNI	13-3/8"	13-3/8"	Basic	15660	-
BJ-39290-0	BJ-39290-CRA	BJ-39290-UNI	14"	12-3/4"	Reducer	39290	
BJ-33249-0	BJ-33249-CRA	BJ-33249-UNI	14"	12-7/8"	Reducer	33249	351112
BJ-25474-0	BJ-25474-CRA	BJ-25474-UNI	14"	13"	Reducer	25474	-
BJ-34029-0	BJ-34029-CRA	BJ-34029-UNI	14"	13-1/8"	Reducer	34029	-
BJ-39289-0	BJ-39289-CRA	BJ-39289-UNI	14"	13-1/4"	Reducer	39289	-
BJ-32700-0	BJ-32700-CRA	BJ-32700-UNI	14"	13-3/8"	Reducer	32700	350612
BJ-39288-0	BJ-39288-CRA	BJ-39288-UNI	14"	13-1/2"	Reducer	39288	
BJ-39287-0	BJ-39287-CRA	BJ-39287-UNI	14"	13-5/8"	Reducer	39287	350413
BJ-39286-0	BJ-39286-CRA	BJ-39286-UNI	14"	13-3/4"	Reducer	39286	
BJ-39285-0	BJ-39285-CRA	BJ-39285-UNI	14"	13-7/8"	Reducer	39285	
BJ-15660-0	BJ-15660-CRA	BJ-15660-UNI	14"	14"	Basic	15660	350113
BJ-15660-0	BJ-15660-CRA	BJ-15660-UNI	16"	16"	Basic	15660	350113
BJ-32561-0	BJ-32561-CRA	BJ-32561-UNI	20"	18-5/8"	Reducer	32561	351213
BJ-15660-0	BJ-15660-CRA	BJ-15660-UNI	20"	20"	Basic	15660	350113

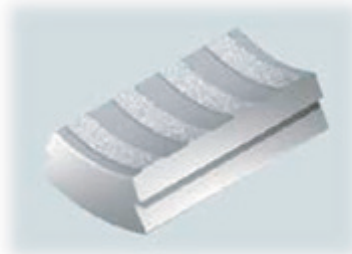
## QUANTITIES REQUIRED BJ<sup>®</sup> TOOLS

BJ <sup>®</sup> Tool Size	Pipe Size	75 Ton YC	HYC	175 Ton	350 Ton 13-3/8"	500 Ton - 13-3/8"	500 Ton 10-3/4"	1000 Ton 14"
3-1/2"	2-3/8" to 3-1/2"	-	-	18	-			
4"	4"	16	-	-	-			
4-1/2"	3-1/2" to 4-1/2"	16	24	27	-			
5-1/2"	4-1/2" to 5-1/2"	16	36	27	36	45	45	-
7"	6" to 7"	24	48	-	48	60	60	-
7-5/8"	6-5/8", 7-3/4"	-	-	45	60	75	75	-
7-5/8"	7" to 7-5/8"	-	48	45	60	-	75	-
8-5/8"	7-5/8"	-	-	45	60	-	-	108
8-5/8"	7-3/4" to 8-3/4"	-	-	-	60	90	90	-
8-5/8"	7-3/4" to 8-3/4"	-	-	-	60	-	90	-
9-5/8"	8-5/8" to 9-3/4"	-	-	-	72	-	-	126
10-3/4"	9-7/8" to 10-3/4"	-	-	-	72	105	-	126
11-3/4"	10-3/4" to 11-3/4"	-	-	-	72	105	-	-
12-1/2"	10-3/4" to 11-3/4"	-	-	-	72	-	-	144
13-3/8"	12-1/2" to 13-1/2"	-	-	-	84	135	-	-
14"						135	-	162

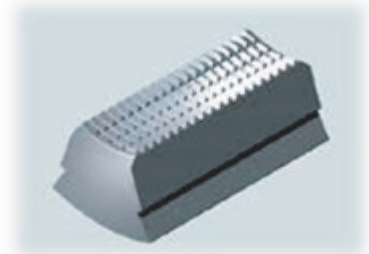
## BAASH-ROSS ® DU HANDLING TOOLS INSERTS



Baash-Ross ® DU Standard Tooth Insert

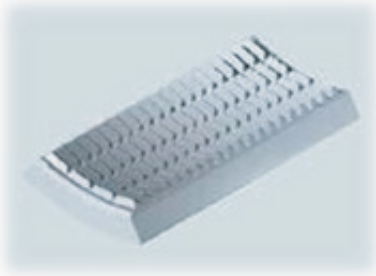


Baash-Ross ® DU 5-1/2" CRA-Grip™ Insert  
Use with Corrosion Resistant Alloy (CRA)  
tubulars

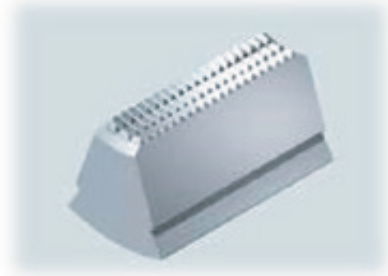


Baash-Ross ® DU Full Face Insert

GDT Standard Tooth #	GDT CRA-Grip™ #	GDT Full Face	Tool Size	Pipe Size	Description	OEM Ref. #
DU-4500-2375-0	DU-4500-2375-CRA	DU-4500-2375-FF	4-1/2"	2-3/8"	Reducer	7613-A-82
DU-4500-2875-0	DU-4500-2875-CRA	DU-4500-2875-FF	4-1/2"	2-7/8"	Reducer	7613-B-82
DU-4500-3000-0	DU-4500-3000-CRA	-	4-1/2"	3	Reducer	-
DU-450-3125-0	DU-450-3125-CRA	-	4-1/2"	3-1/8"	Reducer	-
DU-4500-3250-0	DU-4500-3250-CRA	-	4-1/2"	3-1/4"	Reducer	-
DU-4500-3500-0	DU-4500-3500-CRA	DU-4500-3500-FF	4-1/2"	3-1/2"	Reducer	7613-C-82
DU-4500-3750-0	DU-4500-3750-CRA	DU-4500-3750-FF	4-1/2"	3-3/4"	Reducer	-
DU-4500-4000-0	DU-4500-4000-CRA	DU-4500-4000-FF	4-1/2"	4"	Reducer	7613-FF-81
DU-4500-4125-0	DU-4500-4125-CRA	-	4-1/2"	4-1/8"	Reducer	-
DU-4500-4250-0	DU-4500-4250-CRA	DU-4500-4250-FF	4-1/2"	4-1/4"	Reducer	-
DU-4500-4375-0	DU-4500-4375-CRA	-	4-1/2"	4-3/8"	Reducer	-
DU-4500-4500-0	DU-4500-4500-CRA	DU-4500-4500-FF	4-1/2"	4-1/2"	Basic	7613-A-81
DU-5500-3500-0	DU-5500-3500-CRA	DU-5500-3500-FF	5-1/2"	3-1/2"	Reducer	7613-E-82
DU-5500-0312-0	DU-5500-0312-CRA	DU-5500-0312-FF	5-1/2"	3-3/4"	Reducer	-
DU-5500-4000-0	DU-5500-4000-CRA	DU-5500-4000-FF	5-1/2"	4"	Reducer	7613-D-81
DU-5500-4125-0	DU-5500-4125-CRA	DU-5500-4125-FF	5-1/2"	4-1/8"	Reducer	-
DU-5500-4250-0	DU-5500-4250-CRA	DU-5500-4250-FF	5-1/2"	4-1/4"	Reducer	-
DU-5500-4375-0	DU-5500-4375-CRA	DU-5500-4375-FF	5-1/2"	4-3/8"	Reducer	-
DU-5500-4500-0	DU-5500-4500-CRA	DU-5500-4500-FF	5-1/2"	4-1/2"	Reducer	7613-E-81
DU-5500-4750-0	DU-5500-4750-CRA	DU-5500-4750-FF	5-1/2"	4-3/4"	Reducer	7613-F-81
DU-5500-5000-0	DU-5500-5000-CRA	DU-5500-5000-FF	5-1/2"	5"	Reducer	7613-G-81
DU-5500-5500-0	DU-5500-5500-CRA	DU-5500-5500-FF	5-1/2"	5-1/2"	Basic	7613-H-81
DU-5500-5750-0	DU-5500-5750-CRA	DU-5500-5750-FF	5-1/2"	5-3/4"	Oversize	-
DU-7000-5500-0	DU-7000-5500-CRA	-	7"	5-1/2"	Reducer	7613-Z-81
DU-7000-5750-0	DU-7000-5750-CRA	DU-7000-5750-FF	7"	5-3/4"	Reducer	7613-BB-81
DU-7000-5875-0	DU-7000-5875-CRA	-	7"	5-7/8"	Reducer	-
DU-7000-6000-0	DU-7000-6000-CRA	-	7"	6"	Reducer	7613-CC-81
DU-7000-6625-0	DU-7000-6625-CRA	-	7"	6-5/8"	Reducer	7613-DD-81
DU-7000-7000-0	DU-7000-7000-CRA	-	7"	7"	Basic	7613-EE-81



Baash-Ross ® DU Full Face Insert

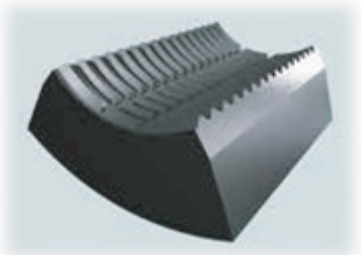


Baash-Ross ® DU Full Face Reducer

## QUANTITIES REQUIRED BAASH-ROSS SLIPS

## ® DU ROTARY

Slip Size	Pipe Size	"DU" Regular	"DU" Long
4-1/2"	All	18	24
5-1/2"	All	18	24
7"	All	18	24

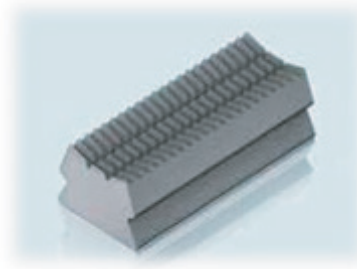


TS100 Spider Bidirectional Tooth Insert

## BAASH ROSS ® TS-100 SPIDER INSERTS

GDT Standard Tooth #	Tool Size	Pipe Size	Description	Quantity	OEM Ref. #
TS-100-1315-0	3-1/2"	1" (1.315")	Reducer	9	7502-A-5076
TS-100-1660-0	3-1/2"	1-1/4" (1.660")	Reducer	9	7502-A-5075
TS-100-1900-0	3-1/2"	1-1/2" (1.900")	Reducer	9	7502-A-5074
TS-100-2000-0	3-1/2"	2"	Reducer	9	7502-A-5073
TS-100-20625-0	3-1/2"	2-1/16"	Reducer	9	7502-A-5072
TS-100-2375-0	3-1/2"	2-3/8"	Reducer	9	7502-A-5071
TS-100-2875-0	3-1/2"	2-7/8"	Reducer	9	7502-A-5070
TS-100-3125-0	3-1/2"	3-1/8"	Reducer	9	7502-A-318
TS-100-3250-0	3-1/2"	3-1/4"	Reducer	9	7502-A-314
TS-100-3375-0	3-1/2"	3-3/8"	Reducer	9	7502-A-338
TS-100-3500-0	3-1/2"	3-1/2"	Basic	9	7502-A-5069

## WOOLLEY<sup>®</sup> INSERTS



WOOLLEY<sup>®</sup> B Insert

## WOOLLEY<sup>®</sup> TYPE "B" DRILL PIPE SLIP INSERTS

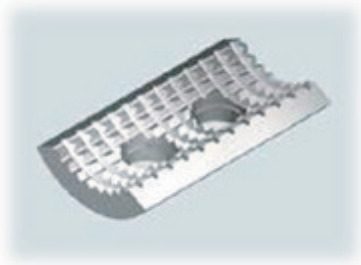
GDT Standard Tooth #	GDT CRA-Grip <sup>™</sup> #	Description	OEM Ref. #
WB-4500-2375-0	WB-4500-2375-CRA	WOOLLEY B 4-1/2" x 2-3/8"	757-044-0123
WB-4500-2785-0	WB-4500-2785-CRA	WOOLLEY B 4-1/2" x 2-7/8"	757-044-0127
WB-4500-3500-0	WB-4500-3500-CRA	WOOLLEY B 4-1/2" x 3-1/2"	757-044-0134
WB-4500-4000-0	WB-4500-4000-CRA	WOOLLEY B 4-1/2" x 4"	757-044-0140
WB-4500-4500-0	WB-4500-4500-CRA	WOOLLEY B 4-1/2" x 4-1/2"	757-044-0144

## WOOLLEY<sup>®</sup> TYPE "A" DRILL COLLAR SLIP INSERTS

GDT Standard Tooth #	GDT CRA-Grip <sup>™</sup> #	Description	OEM Ref. #
WA-5500-7000-0	-	WOOLLEY A 5-1/2" x 7"	797-000-0000



## DIES FOR KELCO<sup>®</sup> HANDLING TOOLS



Kelco<sup>®</sup> K-25 Standard Tooth Die



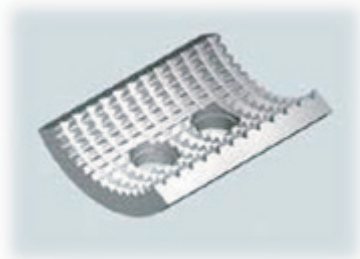
Kelco<sup>®</sup> K-25 CRA-Grip<sup>™</sup> Die  
Use with Corrosion Resistant Alloy  
(CRA) tubulars

### KELCO<sup>®</sup> K-20 DIES (Fine tooth Dies also available)

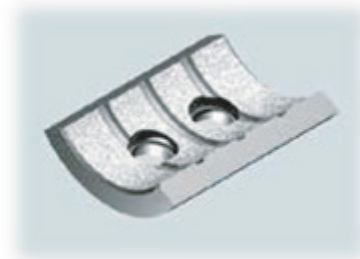
GDT Standard Tooth #	GDT CRA-Grip <sup>™</sup> #	Description	Quantity	OEM Ref. #
KO-2000-1315-0	KO-2000-1315-CRA	1" (1.315") Die	3	04-120
KO-2000-1660-0	KO-2000-1660-CRA	1-1/4" (1.660") Die	3	04-121
KO-2000-1900-0	KO-2000-1900-CRA	1-1/2" (1.900") Die	3	04-122
KO-2000-20625-0	KO-2000-20625-CRA	2-1/16" Die	3	04-123
KO-2000-1660-0	KO-2000-1660-CRA	1-1/4" (1.660") Die	3	-
KO-2000-2375-0	KO-2000-2375-CRA	2-3/8" Die	3	04-124

### KELCO<sup>®</sup> K-25 DIES (Fine tooth Dies also available)

GDT Standard Tooth #	GDT CRA-Grip <sup>™</sup> #	Description	Quantity	OEM Ref. #
KO-2500-1315-0	KO-2500-1315-CRA	1" (1.315") Die	3	05-120
KO-2500-1660-0	KO-2500-1660-CRA	1-1/4" (1.660") Die	3	05-121
KO-2500-1900-0	KO-2500-1900-CRA	1-1/2" (1.900") Die	3	05-122
KO-2500-15625-0	KO-2500-15625-CRA	1-9/16" Die	3	-
KO-2500-18125-0	KO-2500-18125-CRA	1-13/16" Die	3	-
KO-2500-20625-0	KO-2500-20625-CRA	2-1/16" Die	3	05-123
KO-2500-2125-0	KO-2500-2125-CRA	2-1/8" Die	3	-
KO-2500-2250-0	KO-2500-2250-CRA	2-1/4" Die	3	-
KO-2500-2375-0	KO-2500-2375-CRA	2-3/8" Die	3	05-124
KO-2500-2500-0	KO-2500-2500-CRA	2-1/2" Die	3	05-125
KO-2500-26875-0	KO-2500-26875-CRA	2-11/16" Die	3	-
KO-2500-2776-0	KO-2500-2776-CRA	2.776" Die	3	-
KO-2500-2875-0	KO-2500-2875-CRA	2-7/8" Die	3	05-128



Kelco ® K-30 Standard Tooth Die



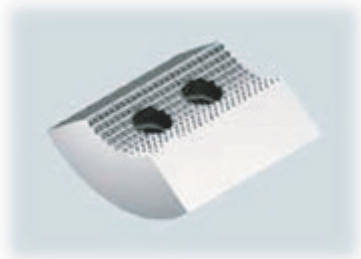
Kelco ® K-30 CRA-Grip™ Die for use with Corrosion Resistant Alloy (CRA)

## KELCO® K-30 DIES (Fine tooth Dies also available)

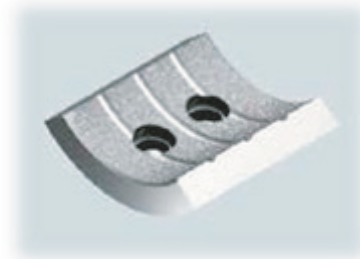
GDT Standard Tooth #	GDT CRA-Grip™ #	Description	Quantity	OEM Ref. #
KO-3000-1900-0	KO-3000-1900-CRA	1-1/2" (1.900") Die	3	06-134
KO-3000-1625-0	KO-3000-1625-CRA	1-5/8" Die	3	-
KO-3000-1688-0	KO-3000-1688-CRA	1-11/16" Die	3	-
KO-3000-1750-0	KO-3000-1750-CRA	1-3/4" Die	3	-
KO-3000-1813-0	KO-3000-1813-CRA	1-13/16" Die	3	-
KO-3000-2000-0	KO-3000-2000-CRA	2" Die	3	-
KO-3000-2063-0	KO-3000-2063-CRA	2-1/16" Die	3	06-119
KO-3000-2125-0	KO-3000-2125-CRA	2-1/8" Die	3	-
KO-3000-2250-0	KO-3000-2250-CRA	2-1/4" Die	3	-
KO-3000-2375-0	KO-3000-2375-CRA	2-3/8" Die	3	06-120
KO-3000-2500-0	KO-3000-2500-CRA	2-1/2" Die	3	-
KO-3000-2625-0	KO-3000-2625-CRA	2-5/8" Die	3	-
KO-3000-2718-0	KO-3000-2718-CRA	2.718" Die	3	-
KO-3000-2776-0	KO-3000-2776-CRA	2.776" Die	3	-
KO-3000-2750-0	KO-3000-2750-CRA	2-3/4" Die	3	-
KO-3000-2875-0	KO-3000-2875-CRA	2-7/8" Die	3	06-121
KO-3000-3000-0	KO-3000-3000-CRA	3" Die	3	06-135
KO-3000-3063-0	KO-3000-3063-CRA	3-1/16" Die	3	06-122
KO-3000-3125-0	KO-3000-3125-CRA	3-1/8" Die	3	06-123
KO-3000-3250-0	KO-3000-3250-CRA	3-1/4" Die	3	06-124
KO-3000-3375-0	KO-3000-3375-CRA	3-3/8" Die	3	06-130
KO-3000-3500-0	KO-3000-3500-CRA	3-1/2" Die	3	06-125
KO-3000-3625-0	KO-3000-3625-CRA	3-5/8" Die	3	-
KO-3000-3668-0	KO-3000-3668-CRA	3.668" Die	3	06-126
KO-3000-3730-0	KO-3000-3730-CRA	3.730" Die	3	-
KO-3000-3750-0	KO-3000-3750-CRA	3-3/4" Die	3	06-127
KO-3000-3866-0	KO-3000-3866-CRA	3.866" Die	3	-



GDT Standard Tooth #	GDT CRA-Grip™ #	Description	Quantity	OEM Ref. #
KO-3000-3875-0	KO-3000-3875-CRA	3-7/8" Die	3	06-131
KO-3000-4000-0	KO-3000-4000-CRA	4" Die	3	-



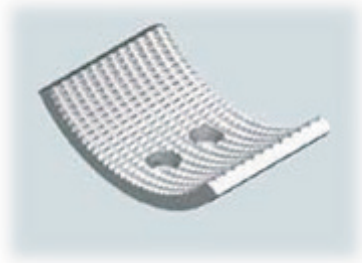
Kelco ® K-50 Standard Tooth Die



Kelco ® K-50 CRA-Grip™ Die  
Use with Corrosion Resistant Alloy (CRA) tubulars

## KELCO® K-50 DIES (Fine tooth Dies also available)

GDT Standard Tooth #	GDT CRA-Grip™ #	Description	Quantity	OEM Ref. #
KO-5000-2375-0	KO-5000-2375-CRA	2-3/8" Die	3	-
KO-5000-2625-0	KO-5000-2625-CRA	2-5/8" Die	3	-
KO-5000-2875-0	KO-5000-2875-CRA	2-7/8" Die	3	06-575
KO-5000-3250-0	KO-5000-3250-CRA	3-1/4" Die	3	-
KO-5000-3375-0	KO-5000-3375-CRA	3-3/8" Die	3	-
KO-5000-3500-0	KO-5000-3500-CRA	3-1/2" Die	3	06-576
KO-5000-3625-0	KO-5000-3625-CRA	3-5/8" Die	3	06-577
KO-5000-3750-0	KO-5000-3750-CRA	3-3/4" Die	3	-
KO-5000-3875-0	KO-5000-3875-CRA	3-7/8" Die	3	-
KO-5000-4000-0	KO-5000-4000-CRA	4" Die	3	06-578
KO-5000-4063-0	KO-5000-4063-CRA	4-1/16" Die	3	-
KO-5000-4125-0	KO-5000-4125-CRA	4-1/8" Die	3	06-579
KO-5000-4250-0	KO-5000-4250-CRA	4-1/4" Die	3	-
KO-5000-4375-0	KO-5000-4375-CRA	4-3/8" Die	3	-
KO-5000-4500-0	KO-5000-4500-CRA	4-1/2" Die	3	06-580
KO-5000-4750-0	KO-5000-4750-CRA	4-3/4" Die	3	06-581
KO-5000-4875-0	KO-5000-4875-CRA	4-7/8" Die	3	-
KO-5000-5000-0	KO-5000-5000-CRA	5" Die	3	06-582
KO-5000-5250-0	KO-5000-5250-CRA	5-1/4" Die	3	-
KO-5000-5375-0	KO-5000-5375-CRA	5-3/8" Die	3	-
KO-5000-5500-0	KO-5000-5500-CRA	5-1/2" Die	3	06-583



Kelco ® K-70 Standard Tooth Die



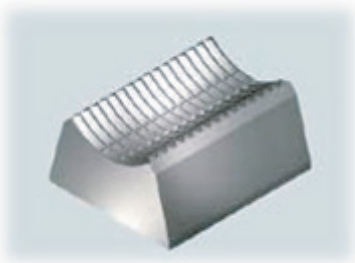
Kelco ® K-70 CRA-Grip™ Die for use with Corrosion Resistant Alloy (CRA)

## KELCO® K-70 DIES (Fine tooth Dies also available)

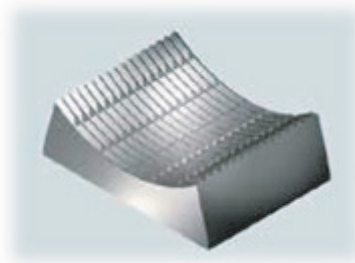
GDT Standard Tooth #	GDT CRA-Grip™ #	Description	Quantity	OEM Ref. #
KO-7000-3500-0	KO-7000-3500-CRA	3-1/2" Die	3	06-758
KO-7000-3750-0	KO-7000-3750-CRA	3-3/4" Die	3	-
KO-7000-4000-0	KO-7000-4000-CRA	4" Die	3	-
KO-7000-4500-0	KO-7000-4500-CRA	4-1/2" Die	3	06-757
KO-7000-4750-0	KO-7000-4750-CRA	4-3/4" Die	3	06-755
KO-7000-4813-0	KO-7000-4813-CRA	4-13/16" Die	3	-
KO-7000-4938-0	KO-7000-4938-CRA	4-15/16" Die	3	-
KO-7000-5000-0	KO-7000-5000-CRA	5" Die	3	06-754
KO-7000-5250-0	KO-7000-5250-CRA	5-1/4" Die	3	-
KO-7000-5500-0	KO-7000-5500-CRA	5-1/2" Die	3	06-753
KO-7000-5750-0	KO-7000-5750-CRA	5-3/4" Die	3	06-759
KO-7000-5875-0	KO-7000-5875-CRA	5-7/8" Die	3	-
KO-7000-6000-0	KO-7000-6000-CRA	6" Die	3	06-752
KO-7000-6050-0	KO-7000-6050-CRA	6.050" Die	3	-
KO-7000-6125-0	KO-7000-6125-CRA	6-1/8" Die	3	-
KO-7000-6250-0	KO-7000-6250-CRA	6-1/4" Die	3	-
KO-7000-6313-0	KO-7000-6313-CRA	6-5/16" Die	3	-
KO-7000-6500-0	KO-7000-6500-CRA	6-1/2" Die	3	-
KO-7000-6625-0	KO-7000-6625-CRA	6-5/8" Die	3	06-751
KO-7000-6875-0	KO-7000-6875-CRA	6-7/8" Die	3	-
KO-7000-7000-0	KO-7000-7000-CRA	7" Die	3	06-750



## HYDRA RIG<sup>®</sup> BOWL & SLIP INSERTS



Hydra Rig<sup>®</sup> 150 Bowl & Slip Insert



Hydra Rig<sup>®</sup> 225 Bowl & Slip Insert

## HYDRA RIG<sup>®</sup> 150 BOWL & SLIP TYPE INSERTS

GDT Standard Tooth #	GDT CRA-Grip <sup>™</sup> #	Description	Quantity	OEM Ref. #
HR-2875-1315-0	HR-2875-1000-CRA	2-7/8" x 1" (1.315")	8	6006
HR-2875-1660-0	HR-2875-1250-CRA	2-7/8" x 1-1/4" (1.66")	8	6005
HR-2875-1900-0	HR-2875-1500-CRA	2-7/8" x 1-1/2" (1.900")	8	6004
HR-2875-2000-0	HR-2875-2000-CRA	2-7/8" x 2"	8	-
HR-2875-20625-0	HR-2875-20625-CRA	2-7/8" x 2-1/16"	8	6003
HR-2875-2375-0	HR-2875-2375-CRA	2-7/8" x 2-3/8"	8	6002
HR-2875-2875-0	HR-2875-2875-CRA	2-7/8" x 2-7/8"	8	6001
HR-2875-3125-0	HR-2875-3125-CRA	2-7/8" x 3-1/8"	8	-
HR-2875-3500-0	HR-2875-3500-CRA	2-7/8" - 3-1/2"	8	6009

## HYDRA RIG<sup>®</sup> 225 BOWL & SLIP TYPE INSERTS

GDT Standard Tooth #	GDT CRA-Grip <sup>™</sup> #	Description	Quantity	OEM Ref. #
HR-5500-2375-0	HR-5500-2375-CRA	5-1/2" x 2-3/8"	12	6157
HR-5500-2875-0	HR-5500-2875-CRA	5-1/2" x 2-7/8"	12	6156
HR-5500-3125-0	HR-5500-3125-CRA	5-1/2" x 3-1/8"	12	-
HR-5500-3500-0	HR-5500-3500-CRA	5-1/2" x 3-1/2"	12	6155
HR-5500-4000-0	HR-5500-4000-CRA	5-1/2" x 4"	12	6154
HR-5500-4500-0	HR-5500-4500-CRA	5-1/2" x 4-1/2"	12	6153
HR-5500-4750-0	HR-5500-4750-CRA	5-1/2" x 4-3/4"	12	-
HR-5500-5000-0	HR-5500-5000-CRA	5-1/2" x 5"	12	6152
HR-5500-5500-0	HR-5500-5500-CRA	5-1/2" x 5-1/2"	12	6151



Hydra Rig 300 Bowl & Slip Insert

## HYDRA RIG<sup>®</sup> 300 BOWL & SLIP TYPE INSERTS

GDT Standard Tooth #	GDT CRA-Grip <sup>™</sup> #	Description	Quantity	OEM Ref. #
HR-7625-2875-0	HR-7625-2875-CRA	7-5/8" x 2-7/8"	4	6181
HR-7625-3500-0	HR-7625-3500-CRA	7-5/8" x 3-1/2"	4	6182
HR-7625-4000-0	HR-7625-4000-CRA	7-5/8" x 4"	4	6179
HR-7625-4500-0	HR-7625-4500-CRA	7-5/8" x 4-1/2"	4	6178
HR-7625-5000-0	HR-7625-5000-CRA	7-5/8" x 5"	4	6180
HR-7625-5500-0	HR-7625-5500-CRA	7-5/8" x 5-1/2"	4	6176
HR-7625-5750-0	HR-7625-5750-CRA	7-5/8" x 5-3/4"	4	6177
HR-7625-6000-0	HR-7625-6000-CRA	7-5/8" x 6"	4	6175
HR-7625-6500-0	HR-7625-6500-CRA	7-5/8" x 6-1/2"	4	-
HR-7625-6625-0	HR-7625-6625-CRA	7-5/8" x 6-5/8"	4	6174
HR-7625-7000-0	HR-7625-7000-CRA	7-5/8" x 7"	4	6172
HR-7625-7625-0	HR-7625-7625-CRA	7-5/8" x 7-5/8"	4	6171



## CAVINS<sup>®</sup> TYPE "C" & "CHD" FULL CIRCLE SLIP INSERTS



Cavins Uni-Directional Standard  
Tooth Insert



Cavins<sup>®</sup> CRA-Grip<sup>™</sup> Insert use with  
Corrosion Resistant Alloy (CRA)

### INSERTS FOR CAVINS<sup>®</sup> TYPE "C" SLIP (3-1/2" body)

GDT BI-Dir. Tooth #	GDT CRA-Grip <sup>™</sup> #	GDT UNI-Dir. Tooth #	Description	OEM Ref. #
CC-3500-2375-0	CC-3500-2375-CRA	CC-3500-2375-UNI	3-1/2" x 2-3/8" Insert	TC-651-3-1/2 X 2-3/8
CC-3500-2875-0	CC-3500-2875-CRA	CC-3500-2875-UNI	3-1/2" x 2-7/8" Insert	TC-651-3-1/2 X 2-7/8
CC-3500-3500-0	CC-3500-3500-CRA	CC-3500-3500-UNI	3-1/2" x 3-1/2" Insert	TC-650-3-1/2

### INSERTS FOR CAVINS<sup>®</sup> TYPE "C" SLIP (4-1/2" body)

GDT BI-Dir. Tooth #	GDT CRA-Grip <sup>™</sup> #	GDT UNI-Dir. Tooth #	Description	OEM Ref. #
CC-4500-3500-0	CC-4500-3500-CRA	CC-4500-3500-UNI	4-1/2" x 3-1/2" Insert	TC-651-4-1/2 X 3-1/2
CC-4500-4000-0	CC-4500-4000-CRA	CC-4500-4000-UNI	4-1/2" x 4" Insert	TC-651-4-1/2 X 4
CC-4500-4500-0	CC-4500-4500-CRA	CC-4500-4500-UNI	4-1/2" x 4-1/2" Insert	TC-651-4-1/2

## CAVINS<sup>®</sup> TYPE "F" SLIPS FULL CIRCLE INSERTS

### INSERTS FOR CAVINS<sup>®</sup> TYPE "F" SLIP (3-1/2" body)

GDT BI-Dir. Tooth #	GDT CRA-Grip <sup>™</sup> #	GDT UNI-Dir. Tooth #	Description	OEM Ref. #
CF-3500-2375-0	CF-3500-2375-CRA	CF-3500-2375-UNI	3-1/2" x 2-3/8" Insert	TF-651-3-1/2 X 2-3/8
CF-3500-2875-0	CF-3500-2875-CRA	CF-3500-2875-UNI	3-1/2" x 2-7/8" Insert	TF-651-3-1/2 X 2-7/8
CF-3500-3500-0	CF-3500-3500-CRA	CF-3500-3500-UNI	3-1/2" x 3-1/2" Insert	TF-650-3-1/2

### INSERTS FOR CAVINS<sup>®</sup> TYPE "F" SLIP (5-1/2" body)

GDT BI-Dir. Tooth #	GDT CRA-Grip <sup>™</sup> #	GDT UNI-Dir. Tooth #	Description	OEM Ref. #
CF-5500-4000-0	CF-5500-4000-CRA	CF-5500-4000-UNI	5-1/2" x 4" Insert	TF-651-5-1/2 X 4
CF-5500-4500-0	CF-5500-4500-CRA	CF-5500-4500-UNI	5-1/2" x 4-1/2" Insert	TF-651-5-1/2 X 4-1/2
CF-5500-5000-0	CF-5500-5000-CRA	CF-5500-5000-UNI	5-1/2" x 5" Insert	TF-651-5-1/2 X 5
CF-5500-5500-0	CF-5500-5500-CRA	CF-5500-5500-UNI	5-1/2" x 5-1/2" Insert	TF-651-5-1/2

### INSERTS FOR CAVINS<sup>®</sup> TYPE "F" SLIP (7-5/8" body)

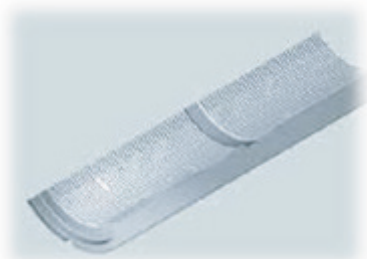
GDT BI-Dir. Tooth #	GDT CRA-Grip <sup>™</sup> #	GDT UNI-Dir. Tooth #	Description	OEM Ref. #
CF-7625-5875-0	CF-7625-5875-CRA	CF-7625-5875-UNI	7-5/8" x 5-7/8" Insert	-
CF-7625-6000-0	CF-7625-6000-CRA	CF-7625-6000-UNI	7-5/8" x 6" Insert	-
CF-7625-6500-0	CF-7625-6500-CRA	CF-7625-6500-UNI	7-5/8" x 6-1/2" Insert	-
CF-7625-6625-0	CF-7625-6625-CRA	CF-7625-6625-UNI	7-5/8" x 6-5/8" Insert	TF-651-7-5/8X 6-5/8
CF-7625-7000-0	CF-7625-7000-CRA	CF-7625-7000-UNI	7-5/8" x 7" Insert	TF-651-7-5/8 X 7
CF-7625-7625-0	CF-7625-7625-CRA	CF-7625-7625-UNI	7-5/8" x 7-5/8" Insert	TF-650-7-5/8



## Oil Country<sup>®</sup> Type "E" Slip Inserts

### INSERTS OIL COUNTRY<sup>®</sup> TYPE E SLIP (3-1/2" body)

GDT BI-Dir. Tooth #	GDT CRA-Grip <sup>™</sup> #	GDT UNI-Dir. Tooth #	Description	OEM Ref. #
OCE-3500-2375-0	OCE-3500-2375-CRA	OCE-3500-2375-UNI	3-1/2" x 2-3/8" Insert	66651-1ST
OCE-3500-2875-0	OCE-3500-2875-CRA	OCE-3500-2875-UNI	3-1/2" x 2-7/8" Insert	66651-2ST
OCE-3500-3500-0	OCE-3500-3500-CRA	OCE-3500-3500-UNI	3-1/2" x 3-1/2" Insert	66651-3ST



Fine Tooth 3-1/2" x 3-1/2" Insert for Oil Country Type E



CRA-Grip<sup>™</sup> 5-1/2" x 5" Insert for Oil Country Type E

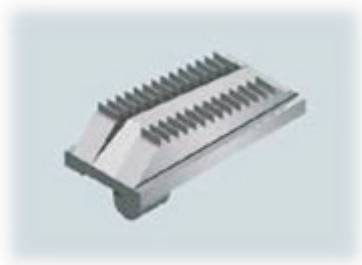
### INSERTS OIL COUNTRY<sup>®</sup> TYPE E SLIP (5-1/2" body)

GDT BI-Dir. Tooth #	GDT CRA-Grip <sup>™</sup> #	GDT UNI-Dir. Tooth #	Description	OEM Ref. #
OCE-5500-4000-0	OCE-5500-4000-CRA	CE-5500-4000-UNI	5-1/2" x 4" Insert	66653-1
OCE-5500-4500-0	CCE-5500-4500-CRA	CE-5500-4500-UNI	5-1/2" x 4-1/2" Insert	66653-2
OCE-5500-5000-0	OCE-5500-5000-CRA	CE-5500-5000-UNI	5-1/2" x 5" Insert	66653-3
OCE-5500-5500-0	OCE-5500-5500-CRA	CE-5500-5500-UNI	5-1/2" X 5-1/2" Insert	66653-4

### INSERTS OIL COUNTRY<sup>®</sup> TYPE E SLIP (7" body)

GDT BI-Dir. Tooth #	GDT CRA-Grip <sup>™</sup> #	GDT UNI-Dir. Tooth #	Description	OEM Ref. #
OCE-7000-5500-0	OCE-7000-5500-CRA	CE-7000-5500-UNI	7" x 5-1/2" Insert	-
OCE-7000-6625-0	OCE-7000-6625-CRA	CE-7000-6625-UNI	7" x 6-5/8" Insert	66654-2ST
OCE-7000-7000-0	OCE-7000-7000-CRA	CE-7000-7000-UNI	7" x 7" Insert	66654-3ST

## TYPE "C" SAFETY CLAMPS



Standard "C" Safety Clamp



CRA-Grip™ "C" Safety Clamp

GDT Part #	GDT CRA-Grip™ Part #	OEM Ref. #
C-7624-0	C-7624-CRA	7624-A-4

Pipe Diameter	QTY. Required
From 3-3/4" to 4-5/8"	7
From 4-1/2" to 5-5/8"	8
From 5-1/2" to 6-5/8"	9
From 6-1/2" to 7-5/8"	10
From 7-1/2" to 8-5/8"	11
From 8-1/2" to 9-5/8"	12
From 9-1/2" to 10-5/8"	13
From 10-1/2" to 11-5/8"	14
From 11-1/2" to 12-5/8"	15
From 12-1/2" to 13-5/8"	16
From 13-1/2" to 14-5/8"	17
From 14-1/2" to 17"	18
From 16-1/2" to 18"	19
From 17-1/2" to 19"	20
From 18-1/2" to 20"	21
From 19-1/2" to 21"	22



## TYPE "T" SAFETY CLAMP INSERTS



Standard "T" Safety Clamp

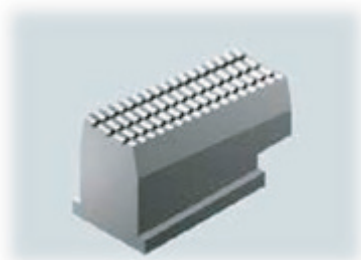


CRA-Grip™ "T" Safety Clamp

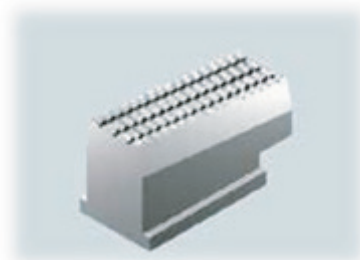
GDT Part #	GDT CRA-Grip™ Part #	OEM Ref. #
T-7624-0	T-7624-CRA	7624-A-21

Pipe Diameter	QTY. Required
From 1-1/8" to 2"	4
From 2-1/8" to 3-1/4"	5
From 3-1/2" to 4-1/2"	6

## "MPS" SAFETY CLAMPS



Standard "MPS" Safety Clamp Insert

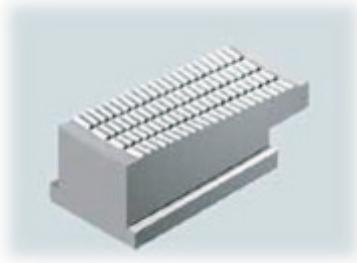


CRA-Grip™ "MPS" Safety Clamp Insert

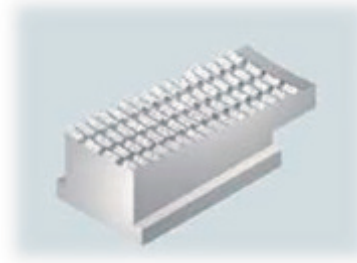
GDT Part #	GDT CRA-Grip™ Part #	OEM Ref. #
MPS-3333-0	MPS-3333-CRA	3333

Pipe Diameter	QTY. Required
From 2-7/8" to 4-1/8"	8
From 4" to 5"	9

## "MP" & "MPR" SAFETY CLAMPS



Standard "MP" Safety Clamp Insert



CRA-Grip™ "MP" Safety Clamp Insert

GDT Part #	GDT CRA-Grip™ Part #	OEM Ref. #
MP-3310-0	MP-3310-CRA	3310

Pipe Diameter	QTY. Required
From 4-1/2" to 5-5/8"	8
From 5-1/2" to 7"	9
From 6-3/4" to 8-1/4"	10
From 8" to 9-1/4"	11
From 9-1/4" to 10-1/2"	12
From 10-1/2" to 11-1/2"	13
From 11-1/2" to 12-1/2"	14
From 12-1/2" to 13-5/8"	15
From 13-5/8" to 14-3/4"	16
From 14-3/4" to 15-7/8"	17
From 15-7/8" to 17"	18
From 17" to 18-1/2"	19
From 18-1/8" to 20-3/8"	20
From 20-3/8" to 21-1/2"	21
From 21" to 22-5/8"	22
From 22-5/8" to 23-3/4"	23
From 23-3/4" to 24-7/8"	24
From 24-7/8" to 26"	25
From 26" to 27-1/8"	26
From 29-3/8" to 30-1/2"	27



## ECKEL<sup>®</sup> TONG & BACKUP WRAPAROUND TYPE

### DIES 4-1/2" HYDRA-SHIFT AND 4-1/2" UHT TONG

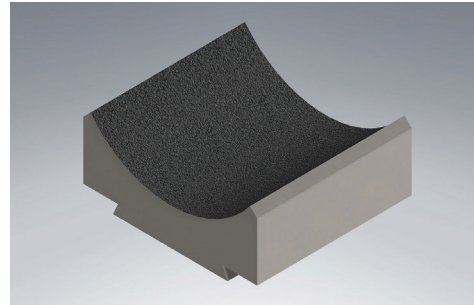
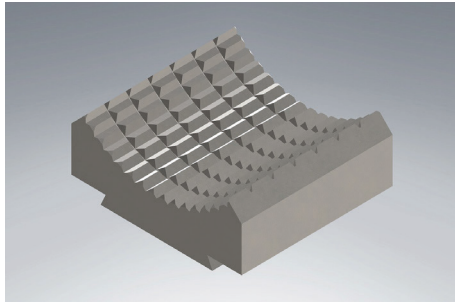
Standard Tooth #	CRA-Grip <sup>™</sup> #	Fine Tooth #	Description	OEM Ref. #
EKL-L-2375-0	EKL-L-2375-CRA	EKL-L-2375-F	2-3/8" Wrap Around	106490
EKL-L-2875-0	EKL-L-2875-CRA	EKL-L-2875-F	2-7/8" Wrap Around	106489
EKL-L-3500-0	EKL-L-3500-CRA	EKL-L-3500-F	3-1/2" Wrap Around	106488
EKL-L-4000-0	EKL-L-4000-CRA	EKL-L-4000-F	4" Wrap Around	106885
EKL-L-4500-0	EKL-L-4500-CRA	EKL-L-4500-F	4-1/2" Wrap Around	106884

### DIES 4-1/2" HYDRA-SHIFT AND 4-1/2" UHT BACKUP

Standard Tooth #	CRA-Grip <sup>™</sup> #	Fine Tooth #	Description	OEM Ref. #
EKL-NNB-2375-0	EKL-NNB-2375-CRA	EKL-NNB-2375-F	2-3/8" WRAP AROUND	112985
EKL-NNB-2875-0	EKL-NNB-2875-CRA	EKL-NNB-2875-F	2-7/8" WRAP AROUND	112986
EKL-NNB-3500-0	EKL-NNB-3500-CRA	EKL-NNB-3500-F	3-1/2" WRAP AROUND	112987
EKL-NNB-4000-0	EKL-NNB-4000-CRA	EKL-NNB-4000-F	4" WRAP AROUND	112988
EKL-NNB-4500-0	EKL-NNB-4500-CRA	EKL-NNB-4500-F	4-1/2" WRAP AROUND	113192

### DIES 5-1/2" HYDRA-SHIFT LS AND 5-1/2" HYDRA-SHIFT VS TONG

Standard Tooth #	CRA-Grip <sup>™</sup> #	Fine Tooth #	Description	OEM Ref. #
EKL-P-2375-0	EKL-P-2375-CRA	EKL-P-2375-F	2-3/8" WRAP AROUND	107482
EKL-P-2875-0	EKL-P-2875-CRA	EKL-P-2875-F	2-7/8" WRAP AROUND	107481
EKL-P-3500-0	EKL-P-3500-CRA	EKL-P-3500-F	3-1/2" WRAP AROUND	107480
EKL-P-4000-0	EKL-P-4000-CRA	EKL-P-4000-F	4" WRAP AROUND	107479
EKL-P-4500-0	EKL-P-4500-CRA	EKL-P-4500-F	4-1/2" WRAP AROUND	107444
EKL-P-5000-0	EKL-P-5000-CRA	EKL-P-5000-F	5" WRAP AROUND	107516
EKL-P-5500-0	EKL-P-5500-CRA	EKL-P-5500-F	5-1/2" WRAP AROUND	107383
EKL-P-6050-0	EKL-P-6050-CRA	EKL-P-6050-F	6.050" WRAP AROUND	



## DIES 5-1/2" HYDRA-SHIFT LS AND 5-1/2" HYDRA-SHIFT VS BACKUP

Standard Tooth #	CRA-Grip™ #	Fine Tooth #	Description	OEM Ref. #
EKL-OTB-2375-0	EKL-OTB-2375-CRA	EKL-OTB-2375-F	2-3/8" WRAP AROUND	113073
EKL-OTB-2875-0	EKL-OTB-2875-CRA	EKL-OTB-2875-F	2-7/8" WRAP AROUND	113074
EKL-OTB-3500-0	EKL-OTB-3500-CRA	EKL-OTB-3500-F	3-1/2" WRAP AROUND	113075
EKL-OTB-4000-0	EKL-OTB-4000-CRA	EKL-OTB-4000-F	4" WRAP AROUND	110376
EKL-OTB-4500-0	EKL-OTB-4500-CRA	EKL-OTB-4500-F	4-1/2" WRAP AROUND	110377
EKL-OTB-5000-0	EKL-OTB-5000-CRA	EKL-OTB-5000-F	5" WRAP AROUND	110378
EKL-OTB-5500-0	EKL-OTB-5500-CRA	EKL-OTB-5500-F	5-1/2" WRAP AROUND	107383
EKL-OTB-6050-0	EKL-OTB-6050-CRA	EKL-OTB-6050-F	6.050" WRAP AROUND	

## DIES 5-1/2" UHT, UHT HS, & 8-5/8" HS HT TONG

Standard Tooth #	CRA-Grip™ #	Fine Tooth #	Description	OEM Ref. #
EKL-Z-2875-0	EKL-Z-2875-CRA	EKL-Z-2875-F	2-7/8" WRAP AROUND	107571
EKL-Z-3500-0	EKL-Z-3500-CRA	EKL-Z-3500-F	3-1/2" WRAP AROUND	107572
EKL-Z-4000-0	EKL-Z-4000-CRA	EKL-Z-4000-F	4" WRAP AROUND	107573
EKL-Z-4500-0	EKL-Z-4500-CRA	EKL-Z-4500-F	4-1/2" WRAP AROUND	106936
EKL-Z-5000-0	EKL-Z-5000-CRA	EKL-Z-5000-F	5" WRAP AROUND	107580

## DIES 5-1/2" UHT, UHT HS, 7-5/8" STD., HD, 8-5/8" HS HT, & 9-5/8" HS BACKUP

Standard Tooth #	CRA-Grip™ #	Fine Tooth #	Description	OEM Ref. #
EKL-ZTB-2875-0	EKL-ZTB-2875-CRA	EKL-ZTB-2875-F	2-7/8" WRAP AROUND	113240
EKL-ZTB-3500-0	EKL-ZTB-3500-CRA	EKL-ZTB-3500-F	3-1/2" WRAP AROUND	113241
EKL-ZTB-4000-0	EKL-ZTB-4000-CRA	EKL-ZTB-4000-F	4" WRAP AROUND	113242
EKL-ZTB-4500-0	EKL-ZTB-4500-CRA	EKL-ZTB-4500-F	4-1/2" WRAP AROUND	113243
EKL-ZTB-5000-0	EKL-ZTB-5000-CRA	EKL-ZTB-5000-F	5" WRAP AROUND	113244

NOTES:





Breaux Bridge  
1369 West Mills Avenue  
Breaux Bridge, LA 70517

Odessa  
4408 Angus Road  
Odessa, TX 79764

Dubai  
Logistics City Sharjah Freezone  
Warehouse LV-21/D  
Sharjah, SH 42378, AE

[mmoiltools.com](http://mmoiltools.com)

877-240-9564 | 337-442-6057 | 337-442-6071 Fax